

Anti-Calmodulin Antibody
Rabbit polyclonal antibody to Calmodulin
Catalog # AP59496

Specification

Anti-Calmodulin Antibody - Product Information

Application	WB, IF
Primary Accession	P62158
Other Accession	P62204
Reactivity	Human, Mouse, Rat, Rabbit, Zebrafish, Chicken, Bovine, SARS
Host	Rabbit
Clonality	Polyclonal

Anti-Calmodulin Antibody - Additional Information

Other Names

CALM; CAM; CAM1; CAM2; CAMB; CALML2; CAM3; CAMC; CAMIII; Calmodulin; CaM

Target/Specificity

Recognizes endogenous levels of Calmodulin protein.

Dilution

WB~~WB (1/500 - 1/1000), IH (1/100 - 1/200), IF/IC (1/100 - 1/500), IP (1/10 - 1/100)
IF~~WB (1/500 - 1/1000), IH (1/100 - 1/200), IF/IC (1/100 - 1/500), IP (1/10 - 1/100)

Format

Liquid in 0.42% Potassium phosphate, 0.87% Sodium chloride, pH 7.3, 30% glycerol, and 0.09% (W/V) sodium azide.

Storage

Store at -20 °C. Stable for 12 months from date of receipt

Anti-Calmodulin Antibody - Protein Information

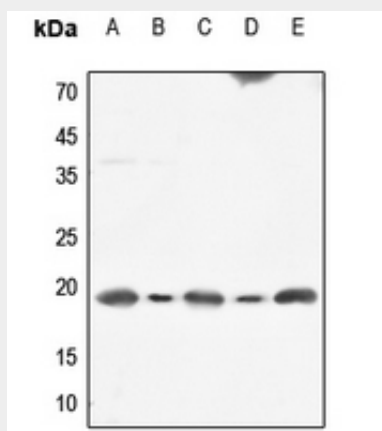
Anti-Calmodulin Antibody - Protocols

Provided below are standard protocols that you may find useful for product applications.

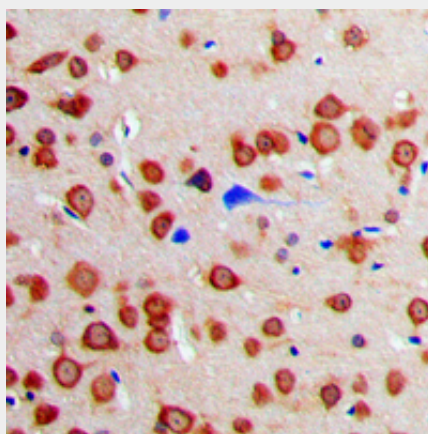
- [Western Blot](#)
- [Blocking Peptides](#)
- [Dot Blot](#)
- [Immunohistochemistry](#)
- [Immunofluorescence](#)
- [Immunoprecipitation](#)
- [Flow Cytometry](#)

- [Cell Culture](#)

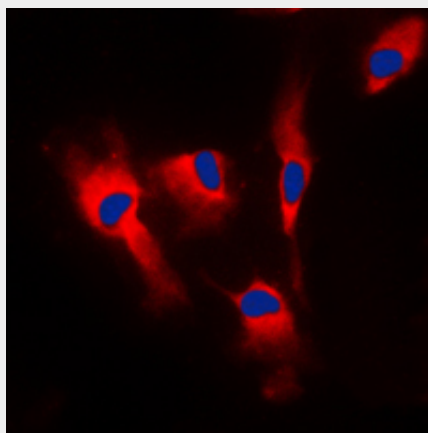
Anti-Calmodulin Antibody - Images



Western blot analysis of Calmodulin expression in HEK293T (A), HeLa (B), mouse testis (C), mouse kidney (D), rat testis (E) whole cell lysates.



Immunohistochemical analysis of Calmodulin staining in human brain formalin fixed paraffin embedded tissue section. The section was pre-treated using heat mediated antigen retrieval with sodium citrate buffer (pH 6.0). The section was then incubated with the antibody at room temperature and detected using an HRP conjugated compact polymer system. DAB was used as the chromogen. The section was then counterstained with haematoxylin and mounted with DPX.



Immunofluorescent analysis of Calmodulin staining in MCF7 cells. Formalin-fixed cells were

permeabilized with 0.1% Triton X-100 in TBS for 5-10 minutes and blocked with 3% BSA-PBS for 30 minutes at room temperature. Cells were probed with the primary antibody in 3% BSA-PBS and incubated overnight at 4 °C in a humidified chamber. Cells were washed with PBST and incubated with a DyLight 594-conjugated secondary antibody (red) in PBS at room temperature in the dark. DAPI was used to stain the cell nuclei (blue).

Anti-Calmodulin Antibody - Background

KLH-conjugated synthetic peptide encompassing a sequence within the center region of human Calmodulin. The exact sequence is proprietary.