

**Anti-Probetacellulin Antibody**  
Rabbit polyclonal antibody to Probetacellulin  
Catalog # AP59492

**Specification**

---

**Anti-Probetacellulin Antibody - Product Information**

Application	WB
Primary Accession	<a href="#">P35070</a>
Reactivity	Human, Rat, Pig, Bovine
Host	Rabbit
Clonality	Polyclonal
Calculated MW	19746

**Anti-Probetacellulin Antibody - Additional Information**

**Gene ID** 685

**Other Names**  
Probetacellulin

**Target/Specificity**  
Recognizes endogenous levels of Probetacellulin protein.

**Dilution**  
WB~~WB (1/500 - 1/1000), IP (1/10 - 1/100)

**Format**  
Liquid in 0.42% Potassium phosphate, 0.87% Sodium chloride, pH 7.3, 30% glycerol, and 0.09% (W/V) sodium azide.

**Storage**  
Store at -20 °C. Stable for 12 months from date of receipt

**Anti-Probetacellulin Antibody - Protein Information**

**Name** BTC

**Function**  
Growth factor that binds to EGFR, ERBB4 and other EGF receptor family members. Potent mitogen for retinal pigment epithelial cells and vascular smooth muscle cells.

**Cellular Location**  
[Betacellulin]: Secreted, extracellular space.

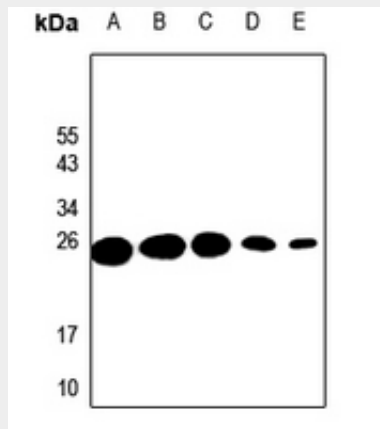
**Tissue Location**  
Synthesized in several tissues and tumor cells. Predominantly expressed in pancreas and small intestine

## Anti-Probetacellulin Antibody - Protocols

Provided below are standard protocols that you may find useful for product applications.

- [Western Blot](#)
- [Blocking Peptides](#)
- [Dot Blot](#)
- [Immunohistochemistry](#)
- [Immunofluorescence](#)
- [Immunoprecipitation](#)
- [Flow Cytometry](#)
- [Cell Culture](#)

## Anti-Probetacellulin Antibody - Images



Western blot analysis of Probetacellulin expression in MCF7 (A), U87MG (B), A549 (C), HeLa (D), PC12 (E) whole cell lysates.

## Anti-Probetacellulin Antibody - Background

KLH-conjugated synthetic peptide encompassing a sequence within the center region of human Probetacellulin. The exact sequence is proprietary.