

**Anti-BRS3 Antibody**  
Rabbit polyclonal antibody to BRS3  
Catalog # AP59490

**Specification**

---

**Anti-BRS3 Antibody - Product Information**

Application	WB
Primary Accession	<a href="#">P32247</a>
Reactivity	Human, Rat
Host	Rabbit
Clonality	Polyclonal
Calculated MW	44411

**Anti-BRS3 Antibody - Additional Information**

**Gene ID** 680

**Other Names**

Bombesin receptor subtype-3; BRS-3

**Target/Specificity**

Recognizes endogenous levels of BRS3 protein.

**Dilution**

WB~~WB (1/500 - 1/1000)

**Format**

Liquid in 0.42% Potassium phosphate, 0.87% Sodium chloride, pH 7.3, 30% glycerol, and 0.09% (W/V) sodium azide.

**Storage**

Store at -20 °C. Stable for 12 months from date of receipt

**Anti-BRS3 Antibody - Protein Information**

**Name** BRS3

**Function**

Role in sperm cell division, maturation, or function. This receptor mediates its action by association with G proteins that activate a phosphatidylinositol-calcium second messenger system.

**Cellular Location**

Cell membrane; Multi-pass membrane protein.

**Tissue Location**

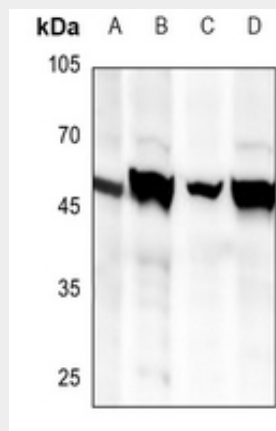
In germ cells in testis. Lung carcinoma cells.

## Anti-BRS3 Antibody - Protocols

Provided below are standard protocols that you may find useful for product applications.

- [Western Blot](#)
- [Blocking Peptides](#)
- [Dot Blot](#)
- [Immunohistochemistry](#)
- [Immunofluorescence](#)
- [Immunoprecipitation](#)
- [Flow Cytometry](#)
- [Cell Culture](#)

## Anti-BRS3 Antibody - Images



Western blot analysis of BRS3 expression in A549 (A), H9C2 (B), PC3 (C), Panc1 (D) whole cell lysates.

## Anti-BRS3 Antibody - Background

KLH-conjugated synthetic peptide encompassing a sequence within the center region of human BRS3. The exact sequence is proprietary.