

**Anti-CD13 Antibody**  
**Rabbit polyclonal antibody to CD13**  
**Catalog # AP59480**

**Specification**

---

**Anti-CD13 Antibody - Product Information**

Application	<b>WB</b>
Primary Accession	<a href="#">P15144</a>
Other Accession	<a href="#">P97449</a>
Reactivity	<b>Human, Mouse, Rat</b>
Host	<b>Rabbit</b>
Clonality	<b>Polyclonal</b>
Calculated MW	<b>109540</b>

**Anti-CD13 Antibody - Additional Information**

**Gene ID** 290

**Other Names**

APN; CD13; PEPN; Aminopeptidase N; AP-N; hAPN; Alanyl aminopeptidase; Aminopeptidase M; AP-M; Microsomal aminopeptidase; Myeloid plasma membrane glycoprotein CD13; gp150; CD13

**Target/Specificity**

Recognizes endogenous levels of CD13 protein.

**Dilution**

WB~~WB (1/500 - 1/1000)

**Format**

Liquid in 0.42% Potassium phosphate, 0.87% Sodium chloride, pH 7.3, 30% glycerol, and 0.09% (W/V) sodium azide.

**Storage**

Store at -20 °C. Stable for 12 months from date of receipt

**Anti-CD13 Antibody - Protein Information**

**Name** ANPEP

**Synonyms** APN, CD13, PEPN

**Function**

Broad specificity aminopeptidase which plays a role in the final digestion of peptides generated from hydrolysis of proteins by gastric and pancreatic proteases. Also involved in the processing of various peptides including peptide hormones, such as angiotensin III and IV, neuropeptides, and chemokines. May also be involved the cleavage of peptides bound to major histocompatibility complex class II molecules of antigen presenting cells. May have a role in angiogenesis and promote cholesterol crystallization. May have a role in amino acid transport by acting as binding

partner of amino acid transporter SLC6A19 and regulating its activity (By similarity).

#### Cellular Location

Cell membrane; Single-pass type II membrane protein. Note=Also found as a soluble form

#### Tissue Location

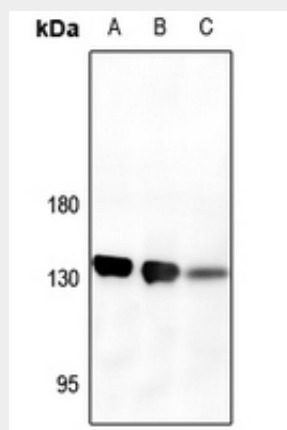
Expressed in epithelial cells of the kidney, intestine, and respiratory tract; granulocytes, monocytes, fibroblasts, endothelial cells, cerebral pericytes at the blood-brain barrier, synaptic membranes of cells in the CNS. Also expressed in endometrial stromal cells, but not in the endometrial glandular cells. Found in the vasculature of tissues that undergo angiogenesis and in malignant gliomas and lymph node metastases from multiple tumor types but not in blood vessels of normal tissues. A soluble form has been found in plasma. It is found to be elevated in plasma and effusions of cancer patients.

#### Anti-CD13 Antibody - Protocols

Provided below are standard protocols that you may find useful for product applications.

- [Western Blot](#)
- [Blocking Peptides](#)
- [Dot Blot](#)
- [Immunohistochemistry](#)
- [Immunofluorescence](#)
- [Immunoprecipitation](#)
- [Flow Cytometry](#)
- [Cell Culture](#)

#### Anti-CD13 Antibody - Images



Western blot analysis of CD13 expression in mouse kidney (A), rat kidney (B), Panc1 (C) whole cell lysates.

#### Anti-CD13 Antibody - Background

KLH-conjugated synthetic peptide encompassing a sequence within the C-term region of human CD13. The exact sequence is proprietary.