

Anti-Beta-2 Adrenergic Receptor (pS346) Antibody
Rabbit polyclonal antibody to Beta-2 Adrenergic Receptor (pS346)
Catalog # AP59476

Specification

Anti-Beta-2 Adrenergic Receptor (pS346) Antibody - Product Information

Application	WB
Primary Accession	P07550
Other Accession	P18762
Reactivity	Human, Mouse, Rat, Bovine, SARS, Dog
Host	Rabbit
Clonality	Polyclonal
Calculated MW	46459

Anti-Beta-2 Adrenergic Receptor (pS346) Antibody - Additional Information

Gene ID 154

Other Names

ADRB2R; B2AR; Beta-2 adrenergic receptor; Beta-2 adrenoreceptor; Beta-2 adrenoceptor

Target/Specificity

Recognizes endogenous levels of Beta-2 Adrenergic Receptor (pS346) protein.

Dilution

WB~~WB (1/500 - 1/1000)

Format

Liquid in 0.42% Potassium phosphate, 0.87% Sodium chloride, pH 7.3, 30% glycerol, and 0.09% (W/V) sodium azide.

Storage

Store at -20 °C. Stable for 12 months from date of receipt

Anti-Beta-2 Adrenergic Receptor (pS346) Antibody - Protein Information

Name ADRB2

Synonyms ADRB2R, B2AR

Function

Beta-adrenergic receptors mediate the catecholamine-induced activation of adenylate cyclase through the action of G proteins. The beta-2-adrenergic receptor binds epinephrine with an approximately 30- fold greater affinity than it does norepinephrine.

Cellular Location

Cell membrane; Multi-pass membrane protein. Early endosome. Golgi apparatus. Note=Colocalizes with VHL at the cell membrane (PubMed:19584355). Activated receptors are internalized into

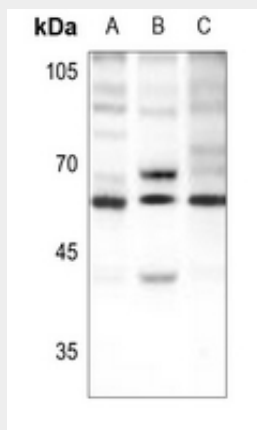
endosomes prior to their degradation in lysosomes (PubMed:20559325) Activated receptors are also detected within the Golgi apparatus (PubMed:27481942).

Anti-Beta-2 Adrenergic Receptor (pS346) Antibody - Protocols

Provided below are standard protocols that you may find useful for product applications.

- [Western Blot](#)
- [Blocking Peptides](#)
- [Dot Blot](#)
- [Immunohistochemistry](#)
- [Immunofluorescence](#)
- [Immunoprecipitation](#)
- [Flow Cytometry](#)
- [Cell Culture](#)

Anti-Beta-2 Adrenergic Receptor (pS346) Antibody - Images



Western blot analysis of Beta-2 Adrenergic Receptor (pS346) expression in PC3 (A), HepG2 (B), HEK293T (C) whole cell lysates.

Anti-Beta-2 Adrenergic Receptor (pS346) Antibody - Background

KLH-conjugated synthetic peptide encompassing a sequence within the C-term region of human Beta-2 Adrenergic Receptor. The exact sequence is proprietary.