

Anti-Alpha-actin-3 Antibody
Rabbit polyclonal antibody to Alpha-actin-3
Catalog # AP59473**Specification**

Anti-Alpha-actin-3 Antibody - Product Information

Application	WB, IF
Primary Accession	P63267
Other Accession	P63268
Reactivity	Human, Mouse, Rat, Rabbit, Chicken, Bovine
Host	Rabbit
Clonality	Polyclonal
Calculated MW	41877

Anti-Alpha-actin-3 Antibody - Additional Information**Gene ID 72****Other Names**

ACTA3; ACTL3; ACTSG; Actin, gamma-enteric smooth muscle; Alpha-actin-3; Gamma-2-actin; Smooth muscle gamma-actin

Target/Specificity

Recognizes endogenous levels of Alpha-actin-3 protein.

Dilution

WB~~WB (1/500 - 1/1000), IH (1/100 - 1/200), IF/IC (1/100 - 1/500)
IF~~WB (1/500 - 1/1000), IH (1/100 - 1/200), IF/IC (1/100 - 1/500)

Format

Liquid in 0.42% Potassium phosphate, 0.87% Sodium chloride, pH 7.3, 30% glycerol, and 0.09% (W/V) sodium azide.

Storage

Store at -20 °C. Stable for 12 months from date of receipt

Anti-Alpha-actin-3 Antibody - Protein Information

Name ACTG2

Synonyms ACTA3, ACTL3, ACTSG

Function

Actins are highly conserved proteins that are involved in various types of cell motility and are ubiquitously expressed in all eukaryotic cells.

Cellular Location

Cytoplasm, cytoskeleton.

Tissue Location

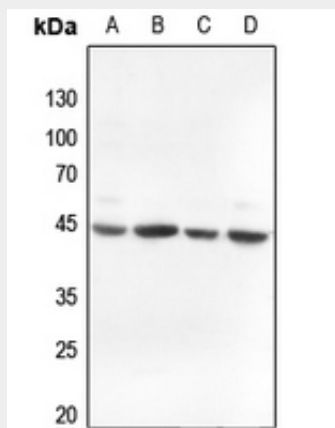
In the intestine, abundantly expressed in smooth muscle cells of muscularis mucosa and muscularis propria. Also detected in intestinal vascular smooth muscle cells

Anti-Alpha-actin-3 Antibody - Protocols

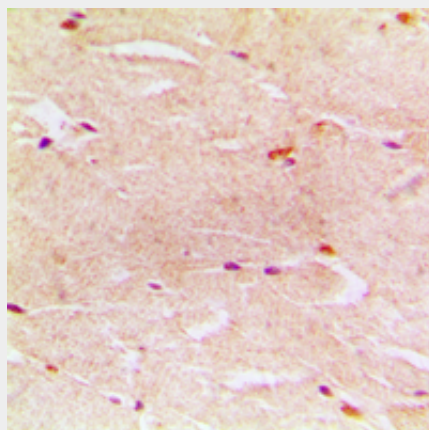
Provided below are standard protocols that you may find useful for product applications.

- [Western Blot](#)
- [Blocking Peptides](#)
- [Dot Blot](#)
- [Immunohistochemistry](#)
- [Immunofluorescence](#)
- [Immunoprecipitation](#)
- [Flow Cytometry](#)
- [Cell Culture](#)

Anti-Alpha-actin-3 Antibody - Images

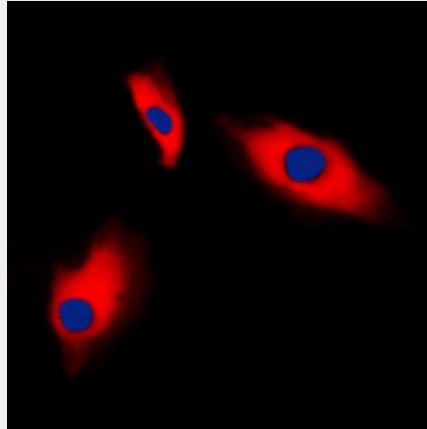


Western blot analysis of Alpha-actin-3 expression in Hela (A), H446 (B), mouse lung (C), rat lung (D) whole cell lysates.



Immunohistochemical analysis of Alpha-actin-3 staining in human muscle formalin fixed paraffin embedded tissue section. The section was pre-treated using heat mediated antigen retrieval with

sodium citrate buffer (pH 6.0). The section was then incubated with the antibody at room temperature and detected using an HRP conjugated compact polymer system. DAB was used as the chromogen. The section was then counterstained with haematoxylin and mounted with DPX.



Immunofluorescent analysis of Alpha-actin-3 staining in HeLa cells. Formalin-fixed cells were permeabilized with 0.1% Triton X-100 in TBS for 5-10 minutes and blocked with 3% BSA-PBS for 30 minutes at room temperature. Cells were probed with the primary antibody in 3% BSA-PBS and incubated overnight at 4 °C in a humidified chamber. Cells were washed with PBST and incubated with a DyLight 594-conjugated secondary antibody (red) in PBS at room temperature in the dark. DAPI was used to stain the cell nuclei (blue).

Anti-Alpha-actin-3 Antibody - Background

KLH-conjugated synthetic peptide encompassing a sequence within the N-term region of human Alpha-actin-3. The exact sequence is proprietary.