

**Anti-Gamma-actin-1 Antibody**  
Rabbit polyclonal antibody to Gamma-actin-1  
Catalog # AP59472

## Specification

---

### Anti-Gamma-actin-1 Antibody - Product Information

Application	WB
Primary Accession	<a href="#">P60709</a> , <a href="#">Q9BYX7</a> , <a href="#">P63261</a>
Other Accession	<a href="#">P60710</a> , <a href="#">P63260</a>
Reactivity	Human, Mouse, Rat, Rabbit, Pig, Chicken, Bovine, SARS
Host	Rabbit
Clonality	Polyclonal

### Anti-Gamma-actin-1 Antibody - Additional Information

#### Other Names

ACTB; Actin, cytoplasmic 1; Beta-actin; POTEKP; ACTBL3; FKSG30; Putative beta-actin-like protein 3; Kappa-actin; POTE ankyrin domain family member K; ACTG1; ACTB; ACTG; Actin, cytoplasmic 2; Gamma-actin

#### Target/Specificity

Recognizes endogenous levels of Gamma-actin-1 protein.

#### Dilution

WB~~WB (1/500 - 1/1000), IH (1/100 - 1/200)

#### Format

Liquid in 0.42% Potassium phosphate, 0.87% Sodium chloride, pH 7.3, 30% glycerol, and 0.09% (W/V) sodium azide.

#### Storage

Store at -20 °C. Stable for 12 months from date of receipt

### Anti-Gamma-actin-1 Antibody - Protein Information

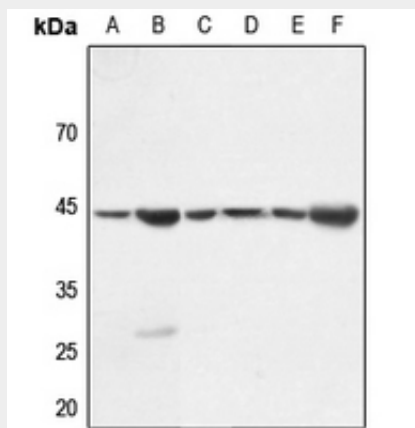
### Anti-Gamma-actin-1 Antibody - Protocols

Provided below are standard protocols that you may find useful for product applications.

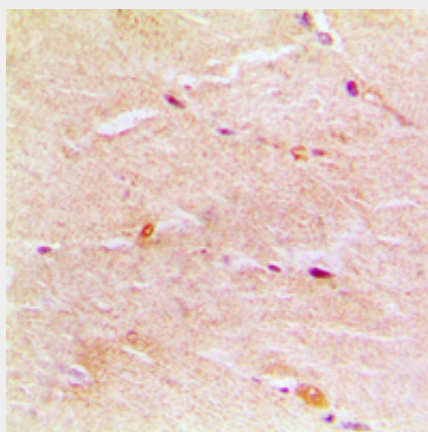
- [Western Blot](#)
- [Blocking Peptides](#)
- [Dot Blot](#)
- [Immunohistochemistry](#)
- [Immunofluorescence](#)
- [Immunoprecipitation](#)

- [Flow Cytometry](#)
- [Cell Culture](#)

### Anti-Gamma-actin-1 Antibody - Images



Western blot analysis of Gamma-actin-1 expression in HEK293T (A), Hela (B), mouse brain (C), rat muscle (D), rat brain (E), rat spleen (F) whole cell lysates.



Immunohistochemical analysis of Gamma-actin-1 staining in human muscle formalin fixed paraffin embedded tissue section. The section was pre-treated using heat mediated antigen retrieval with sodium citrate buffer (pH 6.0). The section was then incubated with the antibody at room temperature and detected using an HRP conjugated compact polymer system. DAB was used as the chromogen. The section was then counterstained with haematoxylin and mounted with DPX.

### Anti-Gamma-actin-1 Antibody - Background

KLH-conjugated synthetic peptide encompassing a sequence within the C-term region of human Gamma-actin-1. The exact sequence is proprietary.