

Anti-Beta-actin Antibody
Mouse monoclonal antibody to Beta-actin
Catalog # AP59466**Specification**

Anti-Beta-actin Antibody - Product Information

| | |
|-------------------|------------------------|
| Application | WB |
| Primary Accession | O7ZV17 |
| Reactivity | Zebrafish |
| Host | Mouse |
| Clonality | Monoclonal |
| Calculated MW | 41767 |

Anti-Beta-actin Antibody - Additional Information**Gene ID** 57934**Other Names**

Actin cytoplasmic 1; Beta-actin

Target/Specificity

Recognizes endogenous levels of Beta-actin protein.

Dilution

WB~~1/2000 - 1/5000

Format

Liquid in 0.42% Potassium phosphate, 0.87% Sodium chloride, pH 7.3, 30% glycerol, and 0.09% (W/V) sodium azide.

Storage

Store at -20 °C. Stable for 12 months from date of receipt

Anti-Beta-actin Antibody - Protein Information**Name** actba**Synonyms** bact, bactin1, bactzf**Function**

Actin is a highly conserved protein that polymerizes to produce filaments that form cross-linked networks in the cytoplasm of cells. Actin exists in both monomeric (G-actin) and polymeric (F-actin) forms, both forms playing key functions, such as cell motility and contraction. In addition to their role in the cytoplasmic cytoskeleton, G- and F-actin also localize in the nucleus, and regulate gene transcription and motility and repair of damaged DNA.

Cellular Location

Cytoplasm, cytoskeleton {ECO:0000250|UniProtKB:P60710}. Nucleus

{ECO:0000250|UniProtKB:O93400}

Tissue Location

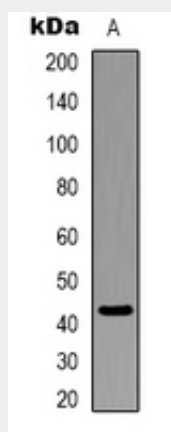
Skeletal muscle, heart, gill, digestive tissue and brain (PubMed:9987040). Widespread expression throughout the brain, with highest levels in regions where neuronal proliferation is greatest (PubMed:9987040).

Anti-Beta-actin Antibody - Protocols

Provided below are standard protocols that you may find useful for product applications.

- [Western Blot](#)
- [Blocking Peptides](#)
- [Dot Blot](#)
- [Immunohistochemistry](#)
- [Immunofluorescence](#)
- [Immunoprecipitation](#)
- [Flow Cytometry](#)
- [Cell Culture](#)

Anti-Beta-actin Antibody - Images



Western blot analysis of Beta-actin expression in zebrafish skeletal muscle (A) whole cell lysates.

Anti-Beta-actin Antibody - Background

KLH-conjugated synthetic peptide encompassing a sequence of zebrafish Beta-actin. The exact sequence is proprietary.