

C12ORF49 Polyclonal Antibody
Purified Rabbit Polyclonal Antibody (Pab)
Catalog # AP59437

Specification

C12ORF49 Polyclonal Antibody - Product Information

Application	WB
Primary Accession	O9H741
Reactivity	Rat, Pig, Dog, Bovine
Host	Rabbit
Clonality	Polyclonal
Calculated MW	23594

C12ORF49 Polyclonal Antibody - Additional Information

Gene ID 79794

Other Names

SREBP regulating gene protein, SREBF pathway regulator in Golgi 1
{ECO:0000312|HGNC:HGNC:26128}, SPRING1 ([HGNC:26128](http://www.genenames.org/cgi-bin/gene_symbol_report?hgnc_id=26128))

Format

0.01M TBS(pH7.4), 0.09% (W/V) sodium azide and 50% Glyce

Storage

Store at -20 °C for one year. Avoid repeated freeze/thaw cycles. When reconstituted in sterile pH 7.4 0.01M PBS or diluent of antibody the antibody is stable for at least two weeks at 2-4 °C.

C12ORF49 Polyclonal Antibody - Protein Information

Name SPRING1 ([HGNC:26128](#))

Function

Positively regulates hepatic SREBP signaling pathway by modulating the proper localization of SCAP (SREBP cleavage-activating protein) to the endoplasmic reticulum, thereby controlling the level of functional SCAP.

Cellular Location

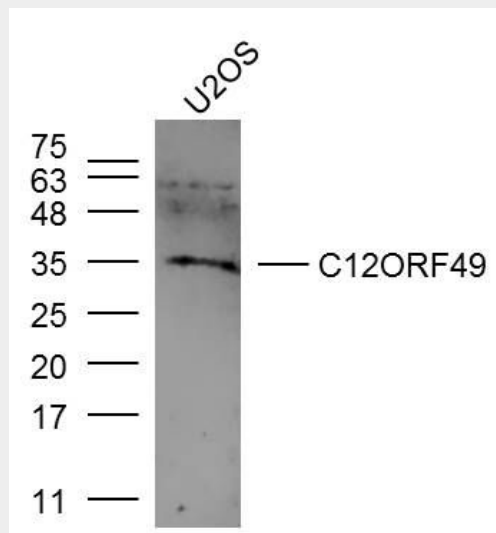
Golgi apparatus membrane; Single-pass membrane protein

C12ORF49 Polyclonal Antibody - Protocols

Provided below are standard protocols that you may find useful for product applications.

- [Western Blot](#)
- [Blocking Peptides](#)
- [Dot Blot](#)
- [Immunohistochemistry](#)
- [Immunofluorescence](#)
- [Immunoprecipitation](#)
- [Flow Cytometry](#)
- [Cell Culture](#)

C12ORF49 Polyclonal Antibody - Images



Sample:

U2OS Cell (Human) Lysate at 30 ug

Primary: Anti-C12ORF49 (bs-9949R) at 1/300 dilution

Secondary: IRDye800CW Goat Anti-Rabbit IgG at 1/20000 dilution

Predicted band size: 24 kD

Observed band size: 35 kD