

FAM96B Polyclonal Antibody
Purified Rabbit Polyclonal Antibody (Pab)
Catalog # AP59364**Specification**

FAM96B Polyclonal Antibody - Product Information

Application	IHC-P
Primary Accession	O9Y3D0
Reactivity	Rat, Pig, Dog, Bovine
Host	Rabbit
Clonality	Polyclonal
Calculated MW	17663

FAM96B Polyclonal Antibody - Additional Information**Gene ID** 51647**Other Names**

Cytosolic iron-sulfur assembly component 2B, MSS19-interacting protein of 18 kDa, Mitotic spindle-associated MMXD complex subunit MIP18, Protein FAM96B, CIAO2B (http://www.genenames.org/cgi-bin/gene_symbol_report?hgnc_id=24261 target="_blank">HGNC:24261)

Format

0.01M TBS(pH7.4), 0.09% (W/V) sodium azide and 50% Glyce

Storage

Store at -20 °C for one year. Avoid repeated freeze/thaw cycles. When reconstituted in sterile pH 7.4 0.01M PBS or diluent of antibody the antibody is stable for at least two weeks at 2-4 °C.

FAM96B Polyclonal Antibody - Protein Information**Name** CIAO2B ([HGNC:24261](#))**Function**

Component of the cytosolic iron-sulfur protein assembly (CIA) complex, a multiprotein complex that mediates the incorporation of iron-sulfur cluster into extramitochondrial Fe/S proteins (PubMed:[22678361](http://www.uniprot.org/citations/22678361), PubMed:[22678362](http://www.uniprot.org/citations/22678362), PubMed:[23891004](http://www.uniprot.org/citations/23891004), PubMed:[29848660](http://www.uniprot.org/citations/29848660)). As a CIA complex component and in collaboration with CIAO1 and MMS19, binds to and facilitates the assembly of most cytosolic-nuclear Fe/S proteins (PubMed:[23891004](http://www.uniprot.org/citations/23891004), PubMed:[29848660](http://www.uniprot.org/citations/29848660)). As part of the mitotic spindle-associated MMXD complex it plays a role in chromosome segregation, probably by facilitating iron-sulfur cluster assembly into ERCC2/XPD (PubMed:[20797633](http://www.uniprot.org/citations/20797633)). Together

with MMS19, facilitates the transfer of Fe-S clusters to the motor protein KIF4A, which ensures proper localization of KIF4A to mitotic machinery components to promote the progression of mitosis (PubMed:<http://www.uniprot.org/citations/29848660> target="_blank">29848660).

Cellular Location

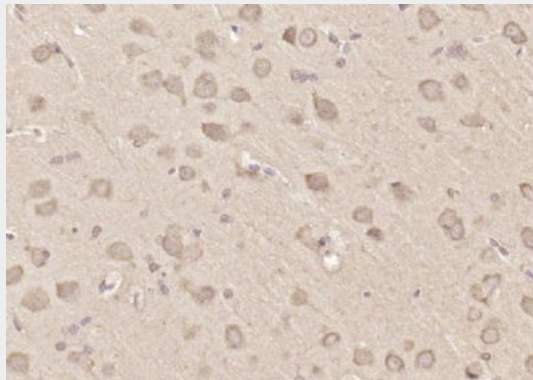
Nucleus. Cytoplasm, cytoskeleton, spindle. Midbody Note=In mitosis, localizes to the spindle during metaphase and the spindle midbody during telophase (PubMed:29848660). Co-localizes with KIF4A to the spindle midzone and midbody during telophase and cytokinesis (PubMed:29848660).

FAM96B Polyclonal Antibody - Protocols

Provided below are standard protocols that you may find useful for product applications.

- [Western Blot](#)
- [Blocking Peptides](#)
- [Dot Blot](#)
- [Immunohistochemistry](#)
- [Immunofluorescence](#)
- [Immunoprecipitation](#)
- [Flow Cytometry](#)
- [Cell Culture](#)

FAM96B Polyclonal Antibody - Images



Paraformaldehyde-fixed, paraffin embedded (rat brain); Antigen retrieval by boiling in sodium citrate buffer (pH6.0) for 15min; Block endogenous peroxidase by 3% hydrogen peroxide for 20 minutes; Blocking buffer (normal goat serum) at 37°C for 30min; Antibody incubation with (FAM96B) Polyclonal Antibody, Unconjugated (bs-9729R) at 1:200 overnight at 4°C, followed by operating according to SP Kit(Rabbit) (sp-0023) instructions and DAB staining.