

KBP Polyclonal Antibody
Purified Rabbit Polyclonal Antibody (Pab)
Catalog # AP59358

Specification

KBP Polyclonal Antibody - Product Information

Application	WB
Primary Accession	O96EK5
Reactivity	Rat
Host	Rabbit
Clonality	Polyclonal
Calculated MW	71814

KBP Polyclonal Antibody - Additional Information

Gene ID 26128

Other Names

KIF-binding protein, KIF1-binding protein, Kinesin family binding protein
{ECO:0000312|HGNC:HGNC:23419}, KIFBP (HGNC:23419)

Format

0.01M TBS(pH7.4), 0.09% (W/V) sodium azide and 50% Glyce

Storage

Store at -20 °C for one year. Avoid repeated freeze/thaw cycles. When reconstituted in sterile pH 7.4 0.01M PBS or diluent of antibody the antibody is stable for at least two weeks at 2-4 °C.

KBP Polyclonal Antibody - Protein Information

Name KIFBP ([HGNC:23419](#))

Function

Activator of KIF1B plus-end-directed microtubule motor activity (PubMed:16225668). Required for organization of axonal microtubules, and axonal outgrowth and maintenance during peripheral and central nervous system development.

Cellular Location

Cytoplasm, cytoskeleton

Tissue Location

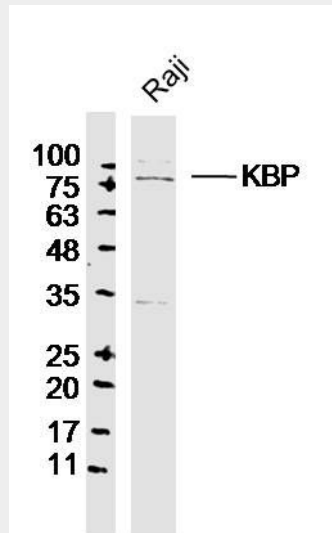
Highly expressed in heart, brain, ovary, testis, spinal cord and all specific brain regions examined. Moderate expressed at intermediate level in all other adult tissues examined, as well as in fetal liver and brain. Not expressed in blood leukocytes

KBP Polyclonal Antibody - Protocols

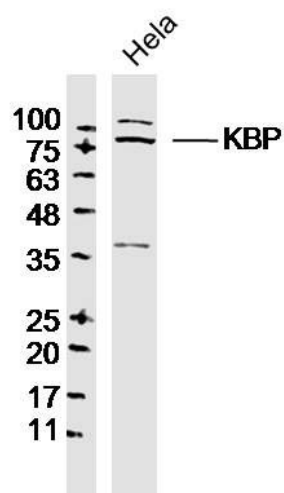
Provided below are standard protocols that you may find useful for product applications.

- [Western Blot](#)
- [Blocking Peptides](#)
- [Dot Blot](#)
- [Immunohistochemistry](#)
- [Immunofluorescence](#)
- [Immunoprecipitation](#)
- [Flow Cytometry](#)
- [Cell Culture](#)

KBP Polyclonal Antibody - Images



Sample: Raji Cell (Human) Lysate at 30 ug
Primary: Anti-KBP (bs-9716R) at 1/300 dilution
Secondary: IRDye800CW Goat Anti-Rabbit IgG at 1/20000 dilution
Predicted band size: 72kD
Observed band size: 75kD



Sample: HeLa Cell (Human) Lysate at 30 ug
Primary: Anti-KBP (bs-9716R) at 1/300 dilution
Secondary: IRDye800CW Goat Anti-Rabbit IgG at 1/20000 dilution
Predicted band size: 72kD
Observed band size: 75kD