

SLC16A9 Antibody (Center)
Affinity Purified Rabbit Polyclonal Antibody (Pab)
Catalog # AP5934c

Specification

SLC16A9 Antibody (Center) - Product Information

Application	WB,E
Primary Accession	O7RTY1
Other Accession	NP_919274.1
Reactivity	Human, Hamster
Host	Rabbit
Clonality	Polyclonal
Isotype	Rabbit IgG
Calculated MW	55794
Antigen Region	194-223

SLC16A9 Antibody (Center) - Additional Information

Gene ID 220963

Other Names

Monocarboxylate transporter 9, MCT 9, Solute carrier family 16 member 9, SLC16A9, C10orf36, MCT9

Target/Specificity

This SLC16A9 antibody is generated from rabbits immunized with a KLH conjugated synthetic peptide between 194-223 amino acids from the Central region of human SLC16A9.

Dilution

WB~~1:1000

Format

Purified polyclonal antibody supplied in PBS with 0.09% (W/V) sodium azide. This antibody is purified through a protein A column, followed by peptide affinity purification.

Storage

Maintain refrigerated at 2-8°C for up to 2 weeks. For long term storage store at -20°C in small aliquots to prevent freeze-thaw cycles.

Precautions

SLC16A9 Antibody (Center) is for research use only and not for use in diagnostic or therapeutic procedures.

SLC16A9 Antibody (Center) - Protein Information

Name SLC16A9 ([HGNC:23520](#))

Synonyms C10orf36, MCT9

Function Extracellular pH-and Na(+)-sensitive low-affinity creatine transporter (PubMed:[31784090](#)). Functions also as a pH-independent carnitine efflux transporter (PubMed:[21886157](#)).

Cellular Location

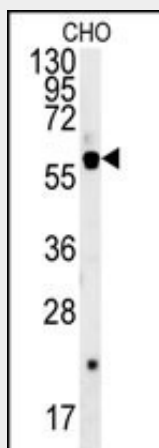
Cell membrane; Multi-pass membrane protein

SLC16A9 Antibody (Center) - Protocols

Provided below are standard protocols that you may find useful for product applications.

- [Western Blot](#)
- [Blocking Peptides](#)
- [Dot Blot](#)
- [Immunohistochemistry](#)
- [Immunofluorescence](#)
- [Immunoprecipitation](#)
- [Flow Cytometry](#)
- [Cell Culture](#)

SLC16A9 Antibody (Center) - Images



SLC16A9 Antibody (Center) (Cat. #AP5934c) western blot analysis in CHO cell line lysates (35ug/lane). This demonstrates the SLC16A9 antibody detected the SLC16A9 protein (arrow).