

Mitoferrin 1 Polyclonal Antibody
Purified Rabbit Polyclonal Antibody (Pab)
Catalog # AP59281

Specification

Mitoferrin 1 Polyclonal Antibody - Product Information

Application	WB
Primary Accession	O9NYZ2
Reactivity	Rat, Pig, Dog, Bovine
Host	Rabbit
Clonality	Polyclonal
Calculated MW	37323

Mitoferrin 1 Polyclonal Antibody - Additional Information

Gene ID 51312

Other Names

Mitoferrin-1, Mitochondrial iron transporter 1, Mitochondrial solute carrier protein, Solute carrier family 25 member 37, SLC25A37, MFRN, MSCP

Format

0.01M TBS(pH7.4), 0.09% (W/V) sodium azide and 50% Glycerol

Storage

Store at -20 °C for one year. Avoid repeated freeze/thaw cycles. When reconstituted in sterile pH 7.4 0.01M PBS or diluent of antibody the antibody is stable for at least two weeks at 2-4 °C.

Mitoferrin 1 Polyclonal Antibody - Protein Information

Name SLC25A37

Synonyms MFRN, MSCP

Function

Mitochondrial iron transporter that specifically mediates iron uptake in developing erythroid cells, thereby playing an essential role in heme biosynthesis.

Cellular Location

Mitochondrion inner membrane {ECO:0000250|UniProtKB:Q287T7}; Multi-pass membrane protein

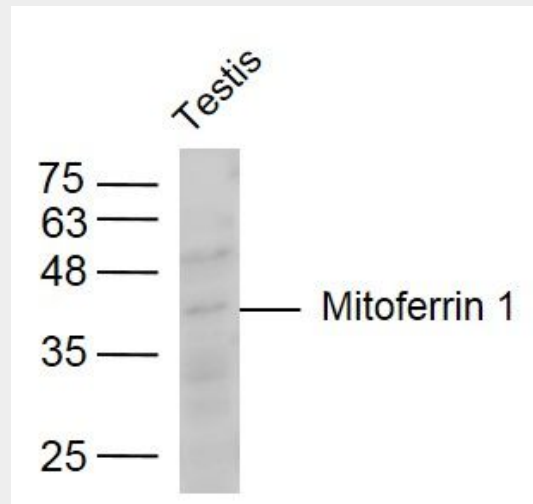
Mitoferrin 1 Polyclonal Antibody - Protocols

Provided below are standard protocols that you may find useful for product applications.

- [Western Blot](#)

- [Blocking Peptides](#)
- [Dot Blot](#)
- [Immunohistochemistry](#)
- [Immunofluorescence](#)
- [Immunoprecipitation](#)
- [Flow Cytometry](#)
- [Cell Culture](#)

Mitoferrin 1 Polyclonal Antibody - Images



Sample:

Testis (Mouse) Lysate at 40 ug

Primary: Anti-Mitoferrin 1 (bs-9523R) at 1/300 dilution

Secondary: IRDye800CW Goat Anti-Rabbit IgG at 1/20000 dilution

Predicted band size: 37 kD

Observed band size: 37 kD