

OCEL1 Polyclonal Antibody
Purified Rabbit Polyclonal Antibody (Pab)
Catalog # AP59236

Specification

OCEL1 Polyclonal Antibody - Product Information

Application	WB
Primary Accession	O9H607
Reactivity	Rat, Pig, Bovine
Host	Rabbit
Clonality	Polyclonal
Calculated MW	29404

OCEL1 Polyclonal Antibody - Additional Information

Gene ID 79629

Other Names

Occludin/ELL domain-containing protein 1, OCEL1

Format

0.01M TBS(pH7.4), 0.09% (W/V) sodium azide and 50% Glyce

Storage

Store at -20 °C for one year. Avoid repeated freeze/thaw cycles. When reconstituted in sterile pH 7.4 0.01M PBS or diluent of antibody the antibody is stable for at least two weeks at 2-4 °C.

OCEL1 Polyclonal Antibody - Protein Information

Name OCEL1

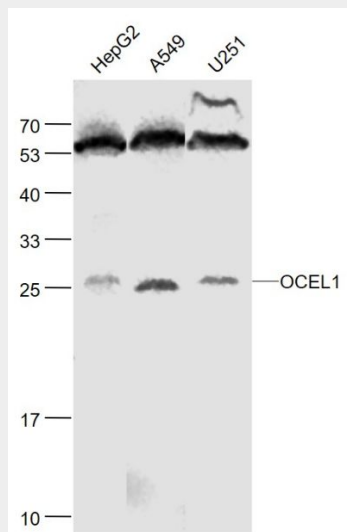
OCEL1 Polyclonal Antibody - Protocols

Provided below are standard protocols that you may find useful for product applications.

- [Western Blot](#)
- [Blocking Peptides](#)
- [Dot Blot](#)
- [Immunohistochemistry](#)
- [Immunofluorescence](#)
- [Immunoprecipitation](#)
- [Flow Cytometry](#)
- [Cell Culture](#)

OCEL1 Polyclonal Antibody - Images



**Sample:**

HepG2(Human) Cell Lysate at 30 ug

A549 (Human) Cell Lysate at 30 ug

U251(Human) Cell Lysate at 30 ug

Primary: Anti-OCEL1 (bs-9368R) at 1/1000 dilution

Secondary: IRDye800CW Goat Anti-Rabbit IgG at 1/20000 dilution

Predicted band size: 29 kD

Observed band size: 27 kD