

**MARCH6 Polyclonal Antibody**  
**Purified Rabbit Polyclonal Antibody (Pab)**  
**Catalog # AP59229**

**Specification**

---

**MARCH6 Polyclonal Antibody - Product Information**

Application	IHC-P
Primary Accession	<a href="#">O60337</a>
Reactivity	Rat, Pig, Dog, Bovine
Host	Rabbit
Clonality	Polyclonal
Calculated MW	102545

**MARCH6 Polyclonal Antibody - Additional Information**

**Gene ID** 10299

**Other Names**

E3 ubiquitin-protein ligase MARCHF6, 2.3.2.27, Doa10 homolog, Membrane-associated RING finger protein 6, Membrane-associated RING-CH protein VI, MARCH-VI, Protein TEB-4, RING finger protein 176, RING-type E3 ubiquitin transferase MARCHF6, MARCHF6 ([http://www.genenames.org/cgi-bin/gene\\_symbol\\_report?hgnc\\_id=30550](http://www.genenames.org/cgi-bin/gene_symbol_report?hgnc_id=30550))  
[HGNC:30550](http://www.genenames.org/cgi-bin/gene_symbol_report?hgnc_id=30550))

**Format**

0.01M TBS(pH7.4), 0.09% (W/V) sodium azide and 50% Glyce

**Storage**

Store at -20 °C for one year. Avoid repeated freeze/thaw cycles. When reconstituted in sterile pH 7.4 0.01M PBS or diluent of antibody the antibody is stable for at least two weeks at 2-4 °C.

**MARCH6 Polyclonal Antibody - Protein Information**

**Name** MARCHF6 ([HGNC:30550](#))

**Function**

E3 ubiquitin-protein ligase that promotes 'Lys-48'-linked ubiquitination of target proteins, leading to their proteasomal degradation (PubMed:[15673284](http://www.uniprot.org/citations/15673284)). Promotes ubiquitination of DIO2, leading to its degradation (PubMed:[19651899](http://www.uniprot.org/citations/19651899)). Promotes ubiquitination of SQLE, leading to its degradation (PubMed:[24449766](http://www.uniprot.org/citations/24449766)). E3 ubiquitin ligases accept ubiquitin from an E2 ubiquitin-conjugating enzyme in the form of a thioester and then directly transfer the ubiquitin to targeted substrates. May cooperate with UBE2G1 (PubMed:[15673284](http://www.uniprot.org/citations/15673284)).

**Cellular Location**

Endoplasmic reticulum membrane; Multi-pass membrane protein

### Tissue Location

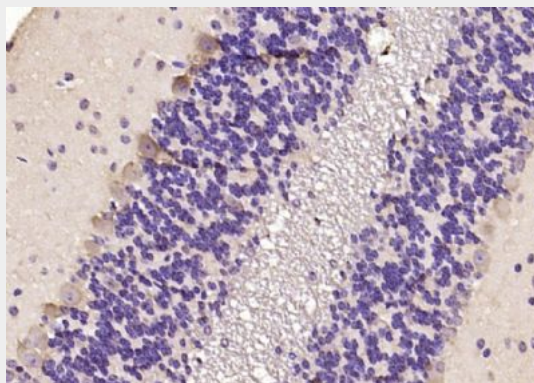
Present in brain (at protein level).

### MARCH6 Polyclonal Antibody - Protocols

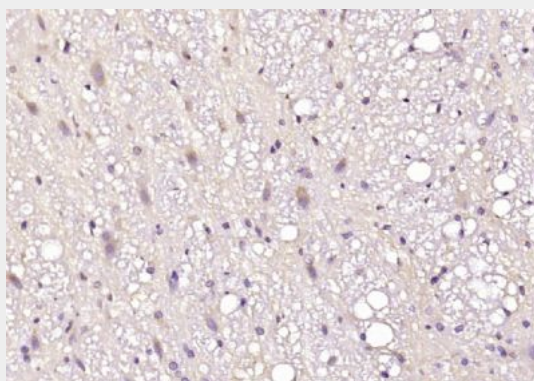
Provided below are standard protocols that you may find useful for product applications.

- [Western Blot](#)
- [Blocking Peptides](#)
- [Dot Blot](#)
- [Immunohistochemistry](#)
- [Immunofluorescence](#)
- [Immunoprecipitation](#)
- [Flow Cytometry](#)
- [Cell Culture](#)

### MARCH6 Polyclonal Antibody - Images



Paraformaldehyde-fixed, paraffin embedded (mouse cerebellum); Antigen retrieval by boiling in sodium citrate buffer (pH6.0) for 15min; Block endogenous peroxidase by 3% hydrogen peroxide for 20 minutes; Blocking buffer (normal goat serum) at 37°C for 30min; Antibody incubation with (MARCH6) Polyclonal Antibody, Unconjugated (bs-9340R) at 1:200 overnight at 4°C, followed by operating according to SP Kit(Rabbit) (sp-0023) instructions and DAB staining.



Paraformaldehyde-fixed, paraffin embedded (rat brain); Antigen retrieval by boiling in sodium citrate buffer (pH6.0) for 15min; Block endogenous peroxidase by 3% hydrogen peroxide for 20 minutes; Blocking buffer (normal goat serum) at 37°C for 30min; Antibody incubation with (MARCH6) Polyclonal Antibody, Unconjugated (bs-9340R) at 1:200 overnight at 4°C, followed by operating according to SP Kit(Rabbit) (sp-0023) instructions and DAB staining.