

**ASZ1 Polyclonal Antibody**  
**Purified Rabbit Polyclonal Antibody (Pab)**  
**Catalog # AP59221****Specification**

---

**ASZ1 Polyclonal Antibody - Product Information**

Application	<b>WB</b>
Primary Accession	<a href="#">O8WWH4</a>
Reactivity	<b>Rat</b>
Host	<b>Rabbit</b>
Clonality	<b>Polyclonal</b>
Calculated MW	<b>53458</b>

**ASZ1 Polyclonal Antibody - Additional Information****Gene ID** 136991**Other Names**

Ankyrin repeat, SAM and basic leucine zipper domain-containing protein 1, Ankyrin-like protein 1, Germ cell-specific ankyrin, SAM and basic leucine zipper domain-containing protein, ASZ1 ([HGNC:1350](http://www.genenames.org/cgi-bin/gene_symbol_report?hgnc_id=1350))

**Format**

0.01M TBS(pH7.4), 0.09% (W/V) sodium azide and 50% Glyce

**Storage**

Store at -20 °C for one year. Avoid repeated freeze/thaw cycles. When reconstituted in sterile pH 7.4 0.01M PBS or diluent of antibody the antibody is stable for at least two weeks at 2-4 °C.

**ASZ1 Polyclonal Antibody - Protein Information****Name** ASZ1 ([HGNC:1350](#))**Function**

Plays a central role during spermatogenesis by repressing transposable elements and preventing their mobilization, which is essential for the germline integrity. Acts via the piRNA metabolic process, which mediates the repression of transposable elements during meiosis by forming complexes composed of piRNAs and Piwi proteins and governs the methylation and subsequent repression of transposons. Its association with pi-bodies suggests a participation in the primary piRNAs metabolic process. Required prior to the pachytene stage to facilitate the production of multiple types of piRNAs, including those associated with repeats involved in the regulation of retrotransposons. May act by mediating protein-protein interactions during germ cell maturation (By similarity).

**Cellular Location**

Cytoplasm. Note=Component of the meiotic nuage, also named P granule, a germ-cell-specific organelle required to repress transposon activity during meiosis. Specifically localizes to pi-bodies,

a subset of the nuage which contains primary piRNAs (By similarity).

#### Tissue Location

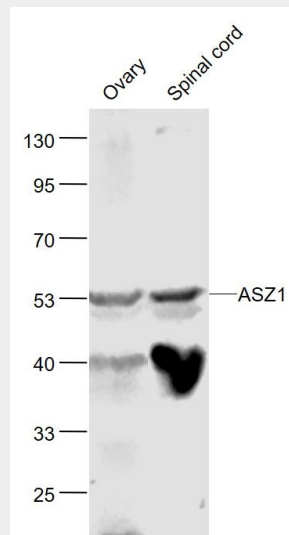
Expressed exclusively in the testis and ovary and at higher levels in the adult testis compared with the adult ovary

#### ASZ1 Polyclonal Antibody - Protocols

Provided below are standard protocols that you may find useful for product applications.

- [Western Blot](#)
- [Blocking Peptides](#)
- [Dot Blot](#)
- [Immunohistochemistry](#)
- [Immunofluorescence](#)
- [Immunoprecipitation](#)
- [Flow Cytometry](#)
- [Cell Culture](#)

#### ASZ1 Polyclonal Antibody - Images



#### Sample:

Ovary(Mouse) Lysate at 40 ug

Spinal cord(Mouse) Lysate at 40 ug

Primary: Anti-ASZ1 (bs-9325R) at 1/1000 dilution

Secondary: IRDye800CW Goat Anti-Rabbit IgG at 1/20000 dilution

Predicted band size: 53 kD

Observed band size: 53 kD