

**NCKAP1 Antibody (Center)**  
**Affinity Purified Rabbit Polyclonal Antibody (Pab)**  
**Catalog # AP5916C**

**Specification**

---

**NCKAP1 Antibody (Center) - Product Information**

Application	WB,E
Primary Accession	<a href="#">O9Y2A7</a>
Other Accession	<a href="#">O640K3</a> , <a href="#">P55161</a> , <a href="#">P28660</a> , <a href="#">BOS6R1</a> , <a href="#">NP_038464.1</a> , <a href="#">NP_995314.1</a>
Reactivity	Human
Predicted	Zebrafish, Mouse, Rat, Xenopus
Host	Rabbit
Clonality	Polyclonal
Isotype	Rabbit IgG
Calculated MW	128790
Antigen Region	631-659

**NCKAP1 Antibody (Center) - Additional Information**

**Gene ID** 10787

**Other Names**

Nck-associated protein 1, NAP 1, Membrane-associated protein HEM-2, p125Nap1, NCKAP1, HEM2, KIAA0587, NAP1

**Target/Specificity**

This NCKAP1 antibody is generated from rabbits immunized with a KLH conjugated synthetic peptide between 631-659 amino acids from the Central region of human NCKAP1.

**Dilution**

WB~~1:1000

**Format**

Purified polyclonal antibody supplied in PBS with 0.09% (W/V) sodium azide. This antibody is purified through a protein A column, followed by peptide affinity purification.

**Storage**

Maintain refrigerated at 2-8°C for up to 2 weeks. For long term storage store at -20°C in small aliquots to prevent freeze-thaw cycles.

**Precautions**

NCKAP1 Antibody (Center) is for research use only and not for use in diagnostic or therapeutic procedures.

**NCKAP1 Antibody (Center) - Protein Information**

**Name** NCKAP1

**Synonyms** HEM2, KIAA0587, NAP1

**Function** Part of the WAVE complex that regulates lamellipodia formation. The WAVE complex regulates actin filament reorganization via its interaction with the Arp2/3 complex. Actin remodeling activity is regulated by RAC1. As component of the WAVE1 complex, required for BDNF-NTRK2 endocytic trafficking and signaling from early endosomes.

#### Cellular Location

Cell membrane {ECO:0000250|UniProtKB:P28660}; Single-pass membrane protein {ECO:0000250|UniProtKB:P28660}; Cytoplasmic side {ECO:0000250|UniProtKB:P28660}. Cell projection, lamellipodium membrane {ECO:0000250|UniProtKB:P28660}; Single-pass membrane protein {ECO:0000250|UniProtKB:P28660}; Cytoplasmic side {ECO:0000250|UniProtKB:P28660}. Note=At the interface between the lamellipodial actin meshwork and the membrane {ECO:0000250|UniProtKB:P28660}

#### Tissue Location

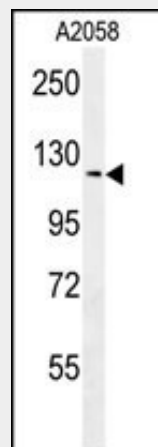
Expressed in all tissues examined except peripheral blood leukocytes, with highest expression in brain, heart, and skeletal muscle. Expressed in cells of various brain regions including Purkinje cells and dentate nucleus of the cerebellum, CA4 region and dentate gyrus of the hippocampus, and in frontal gray and white matter (PubMed:28940097).

### NCKAP1 Antibody (Center) - Protocols

Provided below are standard protocols that you may find useful for product applications.

- [Western Blot](#)
- [Blocking Peptides](#)
- [Dot Blot](#)
- [Immunohistochemistry](#)
- [Immunofluorescence](#)
- [Immunoprecipitation](#)
- [Flow Cytometry](#)
- [Cell Culture](#)

### NCKAP1 Antibody (Center) - Images



NCKAP1 Antibody (Center) (Cat. #AP5916c) western blot analysis in A2058 cell line lysates (35ug/lane). This demonstrates the NCKAP1 antibody detected the NCKAP1 protein (arrow).