

**TRPV5 Polyclonal Antibody**  
**Purified Rabbit Polyclonal Antibody (Pab)**  
**Catalog # AP59028**

**Specification**

---

**TRPV5 Polyclonal Antibody - Product Information**

Application	FC
Primary Accession	<a href="#">O9NOA5</a>
Reactivity	Rat, Pig, Dog, Bovine
Host	Rabbit
Clonality	Polyclonal
Calculated MW	82562

**TRPV5 Polyclonal Antibody - Additional Information**

**Gene ID** 56302

**Other Names**

Transient receptor potential cation channel subfamily V member 5, TrpV5, Calcium transport protein 2, CaT2, Epithelial calcium channel 1, ECaC, ECaC1, Osm-9-like TRP channel 3, OTRPC3, TRPV5, ECAC1 {ECO:0000303|PubMed:10945469}

**Format**

0.01M TBS(pH7.4), 0.09% (W/V) sodium azide and 50% Glyce

**Storage**

Store at -20 °C for one year. Avoid repeated freeze/thaw cycles. When reconstituted in sterile pH 7.4 0.01M PBS or diluent of antibody the antibody is stable for at least two weeks at 2-4 °C.

**TRPV5 Polyclonal Antibody - Protein Information**

**Name** TRPV5

**Synonyms** ECAC1 {ECO:0000303|PubMed:10945469}

**Function**

Constitutively active calcium selective cation channel thought to be involved in Ca(2+) reabsorption in kidney and intestine (PubMed:<a href="http://www.uniprot.org/citations/11549322" target="\_blank">11549322</a>, PubMed:<a href="http://www.uniprot.org/citations/18768590" target="\_blank">18768590</a>). Required for normal Ca(2+) reabsorption in the kidney distal convoluted tubules (By similarity). The channel is activated by low internal calcium level and the current exhibits an inward rectification (PubMed:<a href="http://www.uniprot.org/citations/11549322" target="\_blank">11549322</a>, PubMed:<a href="http://www.uniprot.org/citations/18768590" target="\_blank">18768590</a>). A Ca(2+)-dependent feedback regulation includes fast channel inactivation and slow current decay (By similarity). Heteromeric assembly with TRPV6 seems to modify channel properties. TRPV5-TRPV6 heteromultimeric concatemers exhibit voltage-dependent gating (By similarity).

### Cellular Location

Apical cell membrane; Multi-pass membrane protein. Note=Colocalized with S100A10 and ANAX2 along the apical domain of kidney distal tubular cells (By similarity) The expression of the glycosylated form in the cell membrane is increased in the presence of WNK3 (PubMed:18768590) {ECO:0000250|UniProtKB:P69744, ECO:0000269|PubMed:18768590}

### Tissue Location

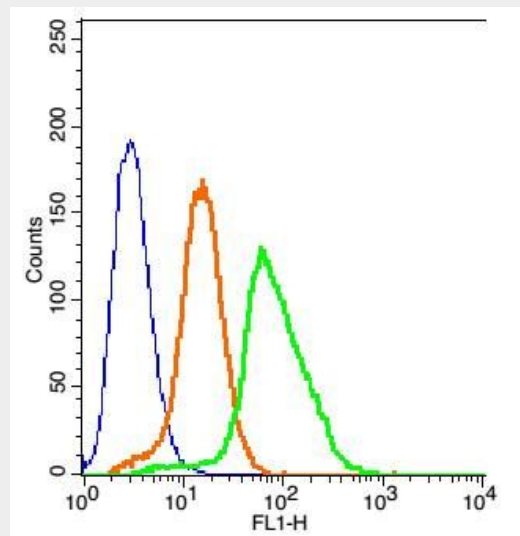
Expressed at high levels in kidney, small intestine and pancreas, and at lower levels in testis, prostate, placenta, brain, colon and rectum.

## TRPV5 Polyclonal Antibody - Protocols

Provided below are standard protocols that you may find useful for product applications.

- [Western Blot](#)
- [Blocking Peptides](#)
- [Dot Blot](#)
- [Immunohistochemistry](#)
- [Immunofluorescence](#)
- [Immunoprecipitation](#)
- [Flow Cytometry](#)
- [Cell Culture](#)

## TRPV5 Polyclonal Antibody - Images



Blank control(blue): 293T Cells(fixed with 2% paraformaldehyde (10 min)).

Primary Antibody: Rabbit Anti-TRPV5/AF488 Conjugated antibody (bs-8534R-AF488), Dilution: 1 µg in 100 µL 1X PBS containing 0.5% BSA;

Isotype Control Antibody: Rabbit IgG/AF488(orange) ,used under the same conditions.