

BTRC2 Polyclonal Antibody
Purified Rabbit Polyclonal Antibody (Pab)
Catalog # AP58987**Specification****BTRC2 Polyclonal Antibody - Product Information**

Application	WB
Primary Accession	O9UKB1
Reactivity	Rat, Pig, Bovine
Host	Rabbit
Clonality	Polyclonal
Calculated MW	62091

BTRC2 Polyclonal Antibody - Additional Information**Gene ID** 23291**Other Names**

F-box/WD repeat-containing protein 11, F-box and WD repeats protein beta-TrCP2, F-box/WD repeat-containing protein 1B, Homologous to Slimb protein, HOS, FBXW11, BTRCP2, FBW1B, FBXW1B, KIAA0696

Format

0.01M TBS(pH7.4), 0.09% (W/V) sodium azide and 50% Glyce

Storage

Store at -20 °C for one year. Avoid repeated freeze/thaw cycles. When reconstituted in sterile pH 7.4 0.01M PBS or diluent of antibody the antibody is stable for at least two weeks at 2-4 °C.

BTRC2 Polyclonal Antibody - Protein Information**Name** FBXW11 {ECO:0000303|PubMed:26837067, ECO:0000312|HGNC:HGNC:13607}**Function**

Substrate recognition component of a SCF (SKP1-CUL1-F-box protein) E3 ubiquitin-protein ligase complex which mediates the ubiquitination and subsequent proteasomal degradation of target proteins (PubMed: [10437795](http://www.uniprot.org/citations/10437795) target="_blank">10437795, PubMed: [10648623](http://www.uniprot.org/citations/10648623) target="_blank">10648623, PubMed: [11158290](http://www.uniprot.org/citations/11158290) target="_blank">11158290, PubMed: [19966869](http://www.uniprot.org/citations/19966869) target="_blank">19966869, PubMed: [20347421](http://www.uniprot.org/citations/20347421) target="_blank">20347421, PubMed: [22017875](http://www.uniprot.org/citations/22017875) target="_blank">22017875, PubMed: [22017876](http://www.uniprot.org/citations/22017876) target="_blank">22017876, PubMed: [36608670](http://www.uniprot.org/citations/36608670) target="_blank">36608670). Probably recognizes and binds to phosphorylated target proteins: the interaction with substrates requires the phosphorylation of the two serine residues in the substrates' destruction motif D-S-G-X(2,3,4)-S (PubMed: [10437795](http://www.uniprot.org/citations/10437795) target="_blank">10437795, PubMed: [10437795](http://www.uniprot.org/citations/10437795) target="_blank">10437795).

<http://www.uniprot.org/citations/10648623> target="_blank">10648623, PubMed:19966869, PubMed:20347421, PubMed:22017875, PubMed:22017876, PubMed:36608670).

SCF(FBXW11) mediates the ubiquitination of phosphorylated CTNNB1 and participates in Wnt signaling regulation (PubMed:10321728). SCF(FBXW11) plays a key role in NF-kappa-B activation by mediating ubiquitination of phosphorylated NFKBIA, leading to its degradation by the proteasome, thereby allowing the associated NF-kappa-B complex to translocate into the nucleus and to activate transcription (PubMed:10321728, PubMed:10437795, PubMed:10644755, PubMed:20347421). The SCF(FBXW11) complex also regulates NF-kappa-B by mediating ubiquitination of phosphorylated NFKB1: specifically ubiquitinates the p105 form of NFKB1, leading to its degradation (PubMed:11158290). SCF(FBXW11) mediates the ubiquitination of IFNAR1 (PubMed:14532120, PubMed:15337770). SCF(FBXW11) mediates the ubiquitination of CEP68; this is required for centriole separation during mitosis (PubMed:25503564). Involved in the oxidative stress-induced a ubiquitin-mediated decrease in RCAN1 (PubMed:18575781). Mediates the degradation of CDC25A induced by ionizing radiation in cells progressing through S phase and thus may function in the intra-S-phase checkpoint (PubMed:14603323). Has an essential role in the control of the clock-dependent transcription via degradation of phosphorylated PER1 and phosphorylated PER2 (PubMed:15917222). SCF(FBXW11) mediates the ubiquitination of CYTH1, and probably CYTH2 (PubMed:29420262). SCF(FBXW11) acts as a regulator of mTORC1 signaling pathway by catalyzing ubiquitination and subsequent proteasomal degradation of phosphorylated DEPTOR, TFE3 and MITF (PubMed:22017875, PubMed:22017876, PubMed:36608670).

Cellular Location

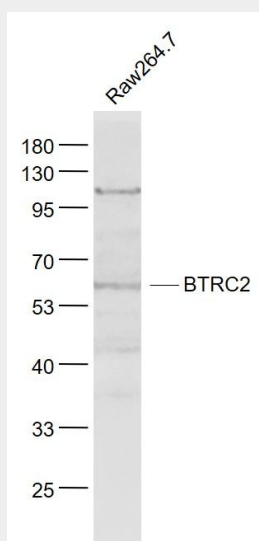
Cytoplasm {ECO:0000250|UniProtKB:Q5SR7}. Nucleus {ECO:0000250|UniProtKB:Q5SR7}

BTRC2 Polyclonal Antibody - Protocols

Provided below are standard protocols that you may find useful for product applications.

- [Western Blot](#)
- [Blocking Peptides](#)
- [Dot Blot](#)
- [Immunohistochemistry](#)
- [Immunofluorescence](#)
- [Immunoprecipitation](#)
- [Flow Cytometry](#)
- [Cell Culture](#)

BTRC2 Polyclonal Antibody - Images

**Sample:**

Raw264.7(Mouse) Cell Lysate at 30 ug

Primary: Anti- BTRC2 (bs-8387R) at 1/1000 dilution

Secondary: IRDye800CW Goat Anti-Rabbit IgG at 1/20000 dilution

Predicted band size: 62 kD

Observed band size: 62 kD