

**IL24 Antibody (C-term)**  
**Affinity Purified Rabbit Polyclonal Antibody (Pab)**  
**Catalog # AP5896b****Specification**

---

**IL24 Antibody (C-term) - Product Information**

Application	WB,E
Primary Accession	<a href="#">O13007</a>
Other Accession	<a href="#">NP_001172085.1</a> , <a href="#">NP_006841.1</a>
Reactivity	Human
Host	Rabbit
Clonality	Polyclonal
Isotype	Rabbit IgG
Calculated MW	23825
Antigen Region	139-168

**IL24 Antibody (C-term) - Additional Information****Gene ID** 11009**Other Names**

Interleukin-24, IL-24, Melanoma differentiation-associated gene 7 protein, MDA-7, Suppression of tumorigenicity 16 protein, IL24, MDA7, ST16

**Target/Specificity**

This IL24 antibody is generated from rabbits immunized with a KLH conjugated synthetic peptide between 139-168 amino acids from the C-terminal region of human IL24.

**Dilution**

WB~~1:1000

**Format**

Purified polyclonal antibody supplied in PBS with 0.09% (W/V) sodium azide. This antibody is purified through a protein A column, followed by peptide affinity purification.

**Storage**

Maintain refrigerated at 2-8°C for up to 2 weeks. For long term storage store at -20°C in small aliquots to prevent freeze-thaw cycles.

**Precautions**

IL24 Antibody (C-term) is for research use only and not for use in diagnostic or therapeutic procedures.

**IL24 Antibody (C-term) - Protein Information****Name** IL24**Synonyms** MDA7, ST16

**Function** Multifunctional cytokine mainly produced by T-cells that plays a regulatory role in immune response, tissue homeostasis, host defense, and oncogenesis (PubMed:[25168428](#), PubMed:[27687232](#)). Possesses antiviral functions and induces the type I interferon response during influenza infection (PubMed:[27687232](#)). Signals through two receptor complexes IL20RA/IL20RB or IL20RB/IL22RA1 (PubMed:[11706020](#), PubMed:[30111632](#)). In turn, stimulates the JAK1-STAT3 and MAPK pathways and promotes the secretion of pro-inflammatory mediators including IL8 and MMP1 (PubMed:[25168428](#)). Intracellularly, maintains endoplasmic reticulum homeostasis by restricting the eIF2alpha-CHOP pathway- mediated stress signal (By similarity). In addition, acts as a quality control mechanism for the ubiquitin proteasome system by alerting the cell to proteasome dysfunction through activation of PKR/EIF2AK2 (By similarity).

#### Cellular Location

Secreted.

#### Tissue Location

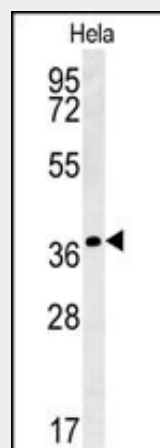
Up-regulated in melanoma cells induced to terminally differentiate

### IL24 Antibody (C-term) - Protocols

Provided below are standard protocols that you may find useful for product applications.

- [Western Blot](#)
- [Blocking Peptides](#)
- [Dot Blot](#)
- [Immunohistochemistry](#)
- [Immunofluorescence](#)
- [Immunoprecipitation](#)
- [Flow Cytometry](#)
- [Cell Culture](#)

### IL24 Antibody (C-term) - Images



IL24 Antibody (C-term) (Cat. #AP5896b) western blot analysis in HeLa cell line lysates (35ug/lane). This demonstrates the IL24 antibody detected the IL24 protein (arrow).