

CCBE1 Polyclonal Antibody
Purified Rabbit Polyclonal Antibody (Pab)
Catalog # AP58823**Specification**

CCBE1 Polyclonal Antibody - Product Information

Application	WB
Primary Accession	O6UXH8
Reactivity	Rat, Pig, Dog
Host	Rabbit
Clonality	Polyclonal
Calculated MW	44103

CCBE1 Polyclonal Antibody - Additional Information**Gene ID** 147372**Other Names**

Collagen and calcium-binding EGF domain-containing protein 1, Full of fluid protein homolog, CCBE1, KIAA1983

Format

0.01M TBS(pH7.4), 0.09% (W/V) sodium azide and 50% Glyce

Storage

Store at -20 °C for one year. Avoid repeated freeze/thaw cycles. When reconstituted in sterile pH 7.4 0.01M PBS or diluent of antibody the antibody is stable for at least two weeks at 2-4 °C.

CCBE1 Polyclonal Antibody - Protein Information**Name** CCBE1**Synonyms** KIAA1983**Function**

Required for lymphangioblast budding and angiogenic sprouting from venous endothelium during embryogenesis.

Cellular Location

Secreted

Tissue Location

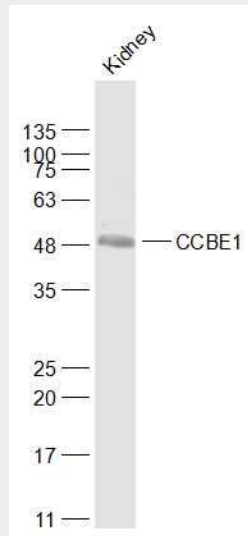
Detected in fibroblasts and urine (at protein level) (PubMed:25326458, PubMed:36213313, PubMed:37453717). Not expressed in blood or lymphatic endothelial cells

CCBE1 Polyclonal Antibody - Protocols

Provided below are standard protocols that you may find useful for product applications.

- [Western Blot](#)
- [Blocking Peptides](#)
- [Dot Blot](#)
- [Immunohistochemistry](#)
- [Immunofluorescence](#)
- [Immunoprecipitation](#)
- [Flow Cytometry](#)
- [Cell Culture](#)

CCBE1 Polyclonal Antibody - Images



Sample:

Kidney (Mouse) Lysate at 40 ug

Primary: Anti-CCBE1 (bs-7985R) at 1/1000 dilution

Secondary: IRDye800CW Goat Anti-Rabbit IgG at 1/20000 dilution

Predicted band size: 41 kD

Observed band size: 49 kD