

**Beta tubulin cofactor D Polyclonal Antibody**  
**Purified Rabbit Polyclonal Antibody (Pab)**  
**Catalog # AP58775****Specification**

---

**Beta tubulin cofactor D Polyclonal Antibody - Product Information**

Application	WB
Primary Accession	<a href="#">O9BTW9</a>
Reactivity	Rat
Host	Rabbit
Clonality	Polyclonal
Calculated MW	132600

**Beta tubulin cofactor D Polyclonal Antibody - Additional Information****Gene ID** 6904**Other Names**

Tubulin-specific chaperone D, Beta-tubulin cofactor D, tfcD, SSD-1, Tubulin-folding cofactor D, TBCD, KIAA0988, SSD1, TFCD

**Format**

0.01M TBS(pH7.4), 0.09% (W/V) sodium azide and 50% Glyce

**Storage**

Store at -20 °C for one year. Avoid repeated freeze/thaw cycles. When reconstituted in sterile pH 7.4 0.01M PBS or diluent of antibody the antibody is stable for at least two weeks at 2-4 °C.

**Beta tubulin cofactor D Polyclonal Antibody - Protein Information****Name** TBCD**Synonyms** KIAA0988, SSD1, TFCD**Function**

Tubulin-folding protein implicated in the first step of the tubulin folding pathway and required for tubulin complex assembly. Involved in the regulation of microtubule polymerization or depolymerization, it modulates microtubule dynamics by capturing GTP- bound beta-tubulin (TUBB). Its ability to interact with beta tubulin is regulated via its interaction with ARL2. Acts as a GTPase-activating protein (GAP) for ARL2. Induces microtubule disruption in absence of ARL2. Increases degradation of beta tubulin, when overexpressed in polarized cells. Promotes epithelial cell detachment, a process antagonized by ARL2. Induces tight adherens and tight junctions disassembly at the lateral cell membrane (PubMed:<a href="http://www.uniprot.org/citations/10722852" target="\_blank">10722852</a>, PubMed:<a href="http://www.uniprot.org/citations/10831612" target="\_blank">10831612</a>, PubMed:<a href="http://www.uniprot.org/citations/11847227" target="\_blank">11847227</a>, PubMed:<a href="http://www.uniprot.org/citations/20740604" target="\_blank">20740604</a>, PubMed:<a href="http://www.uniprot.org/citations/27666370" target="\_blank">27666370</a>, PubMed:<a

<http://www.uniprot.org/citations/28158450> target="\_blank">28158450</a>). Required for correct assembly and maintenance of the mitotic spindle, and proper progression of mitosis (PubMed:<a href="http://www.uniprot.org/citations/27666370" target="\_blank">27666370</a>). Involved in neuron morphogenesis (PubMed:<a href="http://www.uniprot.org/citations/27666374" target="\_blank">27666374</a>).

#### Cellular Location

Cell junction, tight junction {ECO:0000250|UniProtKB:Q28205}. Lateral cell membrane {ECO:0000250|UniProtKB:Q28205}. Cytoplasm {ECO:0000250|UniProtKB:Q28205}. Cell junction, adherens junction {ECO:0000250|UniProtKB:Q28205}. Cytoplasm, cytoskeleton, microtubule organizing center, centrosome Note=Localized in cell-cell contacts. {ECO:0000250|UniProtKB:Q28205}

#### Tissue Location

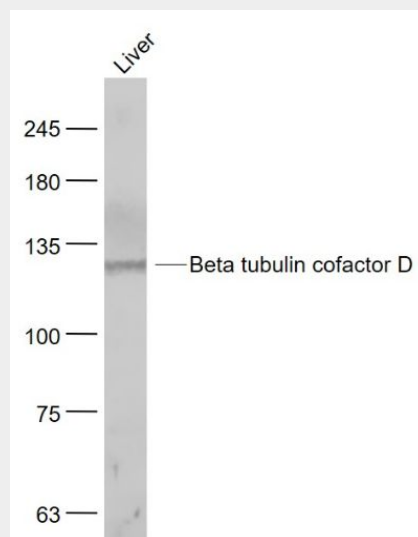
Ubiquitously expressed.

### Beta tubulin cofactor D Polyclonal Antibody - Protocols

Provided below are standard protocols that you may find useful for product applications.

- [Western Blot](#)
- [Blocking Peptides](#)
- [Dot Blot](#)
- [Immunohistochemistry](#)
- [Immunofluorescence](#)
- [Immunoprecipitation](#)
- [Flow Cytometry](#)
- [Cell Culture](#)

### Beta tubulin cofactor D Polyclonal Antibody - Images



#### Sample:

Liver (Mouse) Lysate at 40 ug

Primary: Anti- Beta tubulin cofactor D (bs-7849R) at 1/1000 dilution

Secondary: IRDye800CW Goat Anti-Rabbit IgG at 1/20000 dilution

Predicted band size: 133 kD

Observed band size: 133 kD

