

GPR65 Polyclonal Antibody
Purified Rabbit Polyclonal Antibody (Pab)
Catalog # AP58706

Specification

GPR65 Polyclonal Antibody - Product Information

Application	WB
Primary Accession	Q8IYL9
Reactivity	Rat
Host	Rabbit
Clonality	Polyclonal
Calculated MW	39333

GPR65 Polyclonal Antibody - Additional Information

Gene ID 8477

Other Names

Psychosine receptor, G-protein coupled receptor 65, T-cell death-associated gene 8 protein, GPR65, TDAG8

Format

0.01M TBS(pH7.4), 0.09% (W/V) sodium azide and 50% Glyce

Storage

Store at -20 °C for one year. Avoid repeated freeze/thaw cycles. When reconstituted in sterile pH 7.4 0.01M PBS or diluent of antibody the antibody is stable for at least two weeks at 2-4 °C.

GPR65 Polyclonal Antibody - Protein Information

Name GPR65

Synonyms TDAG8

Function

Receptor for the glycosphingolipid psychosine (PSY) and several related glycosphingolipids (PubMed:11309421). Plays a role in immune response by maintaining lysosome function and supporting phagocytosis-mediated intracellular bacteria clearance (PubMed:27287411). May have a role in activation-induced cell death or differentiation of T-cells (By similarity).

Cellular Location

Cell membrane; Multi-pass membrane protein

Tissue Location

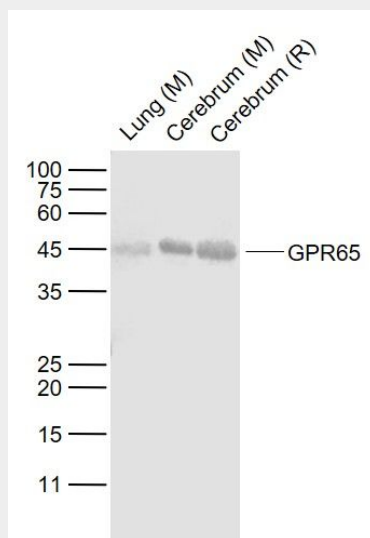
Predominantly expressed in thymus, spleen, lymph nodes, small intestine, lung, placenta and peripheral blood leukocytes

GPR65 Polyclonal Antibody - Protocols

Provided below are standard protocols that you may find useful for product applications.

- [Western Blot](#)
- [Blocking Peptides](#)
- [Dot Blot](#)
- [Immunohistochemistry](#)
- [Immunofluorescence](#)
- [Immunoprecipitation](#)
- [Flow Cytometry](#)
- [Cell Culture](#)

GPR65 Polyclonal Antibody - Images



Sample:

Lane 1: Lung (Mouse) Lysate at 40 ug

Lane 2: Cerebrum (Mouse) Lysate at 40 ug

Lane 3: Cerebrum (Rat) Lysate at 40 ug

Primary: Anti-GPR65 (bs-7668R) at 1/1000 dilution

Secondary: IRDye800CW Goat Anti-Rabbit IgG at 1/20000 dilution

Predicted band size: 40 kD

Observed band size: 44 kD