

**A4GALT Polyclonal Antibody**  
**Purified Rabbit Polyclonal Antibody (Pab)**  
**Catalog # AP58685****Specification**

---

**A4GALT Polyclonal Antibody - Product Information**

Application	FC
Primary Accession	<a href="#">O9NPC4</a>
Reactivity	Rat, Pig, Dog
Host	Rabbit
Clonality	Polyclonal
Calculated MW	40499

**A4GALT Polyclonal Antibody - Additional Information****Gene ID** 53947**Other Names**

Lactosylceramide 4-alpha-galactosyltransferase, 2.4.1.228, Alpha-1, 4-N-acetylglucosaminyltransferase, Alpha-1, 4-galactosyltransferase, Alpha4Gal-T1, CD77 synthase, Globotriaosylceramide synthase, Gb3 synthase, P1/Pk synthase, UDP-galactose:beta-D-galactosyl-beta1-R 4-alpha-D-galactosyltransferase, A4GALT, A14GALT, A4GALT1

**Format**

0.01M TBS(pH7.4), 0.09% (W/V) sodium azide and 50% Glyce

**Storage**

Store at -20 °C for one year. Avoid repeated freeze/thaw cycles. When reconstituted in sterile pH 7.4 0.01M PBS or diluent of antibody the antibody is stable for at least two weeks at 2-4 °C.

**A4GALT Polyclonal Antibody - Protein Information****Name** A4GALT**Synonyms** A14GALT, A4GALT1**Function**

Catalyzes the transfer of galactose from UDP-alpha-D- galactose to lactosylceramide/beta-D-galactosyl-(1->4)-beta-D-glucosyl- (1<->1)-ceramide(d18:1(4E)) to produce globotriaosylceramide/globoside Gb3Cer (d18:1(4E)) (PubMed:<a href="http://www.uniprot.org/citations/10748143" target="\_blank">10748143</a>). Also able to transfer galactose to galactosylceramide/beta-D-Gal-(1<->1')-Cer (PubMed:<a href="http://www.uniprot.org/citations/10748143" target="\_blank">10748143</a>). Globoside Gb3Cer is a glycosphingolipid of the globo serie, one of the major types of neutral root structures of glycosphingolipids, that constitute a significant portion of mammalian cell membranes (Probable). Globotriaosylceramide/globoside Gb3Cer in blood and tissue cell membranes is the antigen Pk of blood histogroup P (PubMed:<a href="http://www.uniprot.org/citations/10747952" target="\_blank">10747952</a>)

target="\_blank">10747952</a>).

#### Cellular Location

Golgi apparatus membrane; Single-pass type II membrane protein

#### Tissue Location

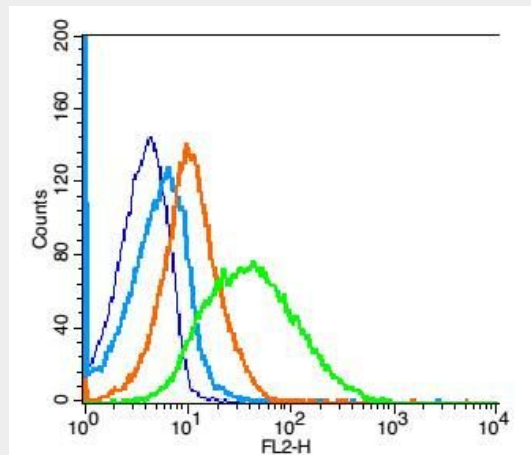
Ubiquitous. Highly expressed in kidney, heart, spleen, liver, testis and placenta

### A4GALT Polyclonal Antibody - Protocols

Provided below are standard protocols that you may find useful for product applications.

- [Western Blot](#)
- [Blocking Peptides](#)
- [Dot Blot](#)
- [Immunohistochemistry](#)
- [Immunofluorescence](#)
- [Immunoprecipitation](#)
- [Flow Cytometry](#)
- [Cell Culture](#)

### A4GALT Polyclonal Antibody - Images



Blank control(blue):mouse spleen cells (fixed with 2% paraformaldehyde (10 min), then permeabilized with 90% ice-cold methanol for 30 min on ice).

Primary Antibody: Rabbit Anti- A4GALT antibody(bs-7588R), Dilution: 1  $\mu$ g in 100  $\mu$ L 1X PBS containing 0.5% BSA;

Isotype Control Antibody: Rabbit IgG(orange) ,used under the same conditions );

Secondary Antibody: Goat anti-rabbit IgG-PE(white blue), Dilution: 1:200 in 1 X PBS containing 0.5% BSA.