

**RASD2 Polyclonal Antibody**  
**Purified Rabbit Polyclonal Antibody (Pab)**  
**Catalog # AP58569**

**Specification**

---

**RASD2 Polyclonal Antibody - Product Information**

Application	WB
Primary Accession	<a href="#">O96D21</a>
Reactivity	Rat, Dog
Host	Rabbit
Clonality	Polyclonal
Calculated MW	30366

**RASD2 Polyclonal Antibody - Additional Information**

**Gene ID** 23551

**Other Names**

GTP-binding protein Rhes, Ras homolog enriched in striatum, Tumor endothelial marker 2, RASD2, TEM2

**Format**

0.01M TBS(pH7.4), 0.09% (W/V) sodium azide and 50% Glyce

**Storage**

Store at -20 °C for one year. Avoid repeated freeze/thaw cycles. When reconstituted in sterile pH 7.4 0.01M PBS or diluent of antibody the antibody is stable for at least two weeks at 2-4 °C.

**RASD2 Polyclonal Antibody - Protein Information**

**Name** RASD2

**Synonyms** TEM2

**Function**

GTPase signaling protein that binds to and hydrolyzes GTP. Regulates signaling pathways involving G-proteins-coupled receptor and heterotrimeric proteins such as GNB1, GNB2 and GNB3. May be involved in selected striatal competencies, mainly locomotor activity and motor coordination.

**Cellular Location**

Cell membrane; Lipid-anchor

**Tissue Location**

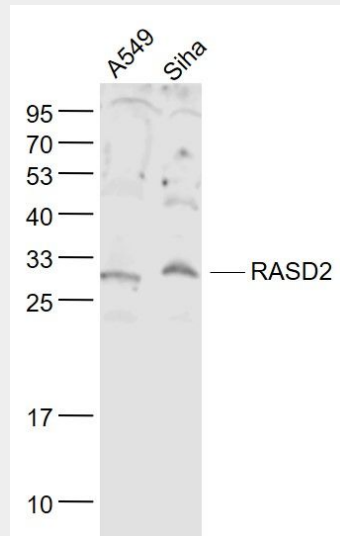
Pancreatic endocrine cells (islets of Langerhans).

**RASD2 Polyclonal Antibody - Protocols**

Provided below are standard protocols that you may find useful for product applications.

- [Western Blot](#)
- [Blocking Peptides](#)
- [Dot Blot](#)
- [Immunohistochemistry](#)
- [Immunofluorescence](#)
- [Immunoprecipitation](#)
- [Flow Cytometry](#)
- [Cell Culture](#)

### RASD2 Polyclonal Antibody - Images



#### Sample:

A549(Human) Cell Lysate at 30 ug

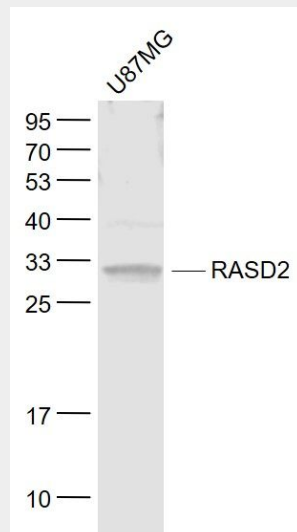
Siha(Human) Cell Lysate at 30 ug

Primary: Anti- RASD2 (bs-7006R) at 1/1000 dilution

Secondary: IRDye800CW Goat Anti-Rabbit IgG at 1/20000 dilution

Predicted band size: 30 kD

Observed band size: 30 kD



**Sample:**

U87MG(Human) Cell Lysate at 30 ug

Primary: Anti- RASD2 (bs-7006R) at 1/1000 dilution

Secondary: IRDye800CW Goat Anti-Rabbit IgG at 1/20000 dilution

Predicted band size: 30 kD

Observed band size: 30 kD