

PMPCB Polyclonal Antibody
Purified Rabbit Polyclonal Antibody (Pab)
Catalog # AP58568**Specification**

PMPCB Polyclonal Antibody - Product Information

Application	IHC-P
Primary Accession	O75439
Reactivity	Rat
Host	Rabbit
Clonality	Polyclonal
Calculated MW	54366

PMPCB Polyclonal Antibody - Additional Information**Gene ID** 9512**Other Names**

Mitochondrial-processing peptidase subunit beta, 3.4.24.64, Beta-MPP, P-52, PMPCB, MPPB

Format

0.01M TBS(pH7.4), 0.09% (W/V) sodium azide and 50% Glyce

Storage

Store at -20 °C for one year. Avoid repeated freeze/thaw cycles. When reconstituted in sterile pH 7.4 0.01M PBS or diluent of antibody the antibody is stable for at least two weeks at 2-4 °C.

PMPCB Polyclonal Antibody - Protein Information**Name** PMPCB**Synonyms** MPPB**Function**

Catalytic subunit of the essential mitochondrial processing protease (MPP), which cleaves the mitochondrial sequence off newly imported precursor proteins (Probable) (PubMed: [29576218](http://www.uniprot.org/citations/29576218)). Preferentially, cleaves after an arginine at position P2 (By similarity). Required for PINK1 turnover by coupling PINK1 mitochondrial import and cleavage, which results in subsequent PINK1 proteolysis (PubMed: [22354088](http://www.uniprot.org/citations/22354088)).

Cellular Location

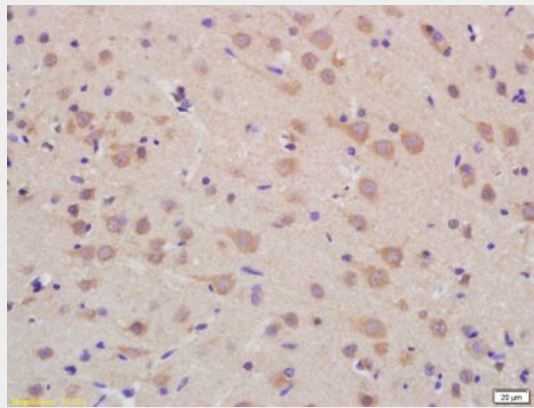
Mitochondrion matrix

PMPCB Polyclonal Antibody - Protocols

Provided below are standard protocols that you may find useful for product applications.

- [Western Blot](#)
- [Blocking Peptides](#)
- [Dot Blot](#)
- [Immunohistochemistry](#)
- [Immunofluorescence](#)
- [Immunoprecipitation](#)
- [Flow Cytometry](#)
- [Cell Culture](#)

PMPCB Polyclonal Antibody - Images



Tissue/cell: rat brain tissue; 4% Paraformaldehyde-fixed and paraffin-embedded;

Antigen retrieval: citrate buffer (0.01M, pH 6.0), Boiling bathing for 15min; Block endogenous peroxidase by 3% Hydrogen peroxide for 30min; Blocking buffer (normal goat serum,C-0005) at 37°C for 20 min;

Incubation: Anti-PMPCB Polyclonal Antibody, Unconjugated(bs-7003R) 1:200, overnight at 4°C, followed by conjugation to the secondary antibody(SP-0023) and DAB(C-0010) staining