

**ERR-alpha Polyclonal Antibody**  
**Purified Rabbit Polyclonal Antibody (Pab)**  
**Catalog # AP58566**

**Specification**

---

**ERR-alpha Polyclonal Antibody - Product Information**

|                   |                        |
|-------------------|------------------------|
| Application       | IHC-P, WB              |
| Primary Accession | <a href="#">P11474</a> |
| Reactivity        | Rat, Pig, Dog, Bovine  |
| Host              | Rabbit                 |
| Clonality         | Polyclonal             |
| Calculated MW     | 45510                  |

**ERR-alpha Polyclonal Antibody - Additional Information**

**Gene ID** 2101

**Other Names**

Steroid hormone receptor ERR1, Estrogen receptor-like 1, Estrogen-related receptor alpha, ERR-alpha, Nuclear receptor subfamily 3 group B member 1, ESRRA, ERR1, ESRL1, NR3B1

**Format**

0.01M TBS(pH7.4), 0.09% (W/V) sodium azide and 50% Glyce

**Storage**

Store at -20 °C for one year. Avoid repeated freeze/thaw cycles. When reconstituted in sterile pH 7.4 0.01M PBS or diluent of antibody the antibody is stable for at least two weeks at 2-4 °C.

**ERR-alpha Polyclonal Antibody - Protein Information**

**Name** ESRRA

**Synonyms** ERR1, ESRL1, NR3B1

**Function**

Binds to an ERR-alpha response element (ERRE) containing a single consensus half-site, 5'-TNAAGGTCA-3'. Can bind to the medium- chain acyl coenzyme A dehydrogenase (MCAD) response element NRRE-1 and may act as an important regulator of MCAD promoter. Binds to the C1 region of the lactoferrin gene promoter. Requires dimerization and the coactivator, PGC-1A, for full activity. The ERRalpha/PGC1alpha complex is a regulator of energy metabolism. Induces the expression of PERM1 in the skeletal muscle.

**Cellular Location**

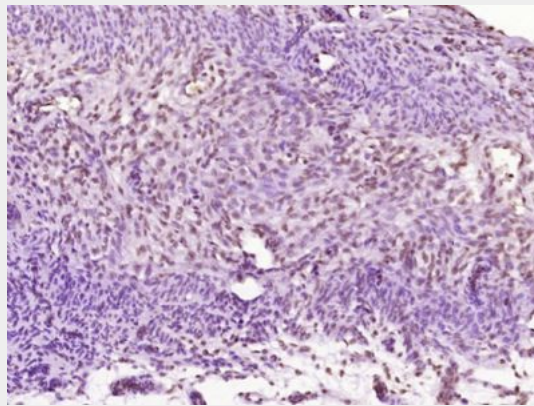
Nucleus {ECO:0000255|PROSITE-ProRule:PRU00407, ECO:0000269|PubMed:18063693, ECO:0000269|PubMed:21190936}. Cytoplasm. Note=Co-localizes to the cytoplasm only in presence of MAPK15.

## ERR-alpha Polyclonal Antibody - Protocols

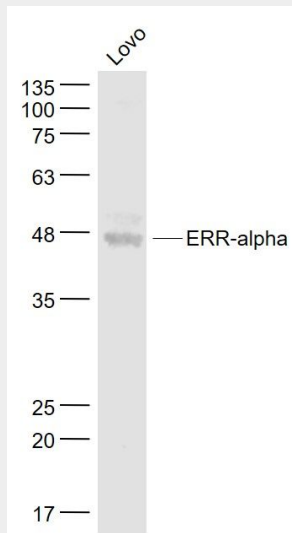
Provided below are standard protocols that you may find useful for product applications.

- [Western Blot](#)
- [Blocking Peptides](#)
- [Dot Blot](#)
- [Immunohistochemistry](#)
- [Immunofluorescence](#)
- [Immunoprecipitation](#)
- [Flow Cytometry](#)
- [Cell Culture](#)

## ERR-alpha Polyclonal Antibody - Images



Paraformaldehyde-fixed, paraffin embedded (Mouse uterus); Antigen retrieval by boiling in sodium citrate buffer (pH6.0) for 15min; Block endogenous peroxidase by 3% hydrogen peroxide for 20 minutes; Blocking buffer (normal goat serum) at 37°C for 30min; Antibody incubation with (ERR-alpha) Polyclonal Antibody, Unconjugated (bs-6998R) at 1:400 overnight at 4°C, followed by operating according to SP Kit(Rabbit) (sp-0023) instructions and DAB staining.



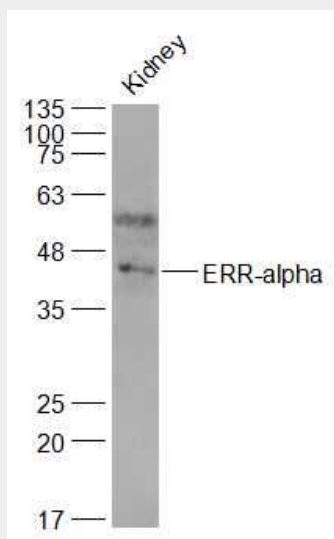
### Sample:

Lovp(Human) Cell Lysate at 30 ug

Primary: Anti- ERR-alpha (bs-6998R) at 1/1000 dilution

Secondary: IRDye800CW Goat Anti-Rabbit IgG at 1/20000 dilution

Predicted band size: 47 kD  
Observed band size: 47 kD



**Sample:**

Kidney (Mouse) Lysate at 40 ug

Primary: Anti-ERR-alpha (bs-6998R) at 1/1000 dilution

Secondary: IRDye800CW Goat Anti-Rabbit IgG at 1/20000 dilution

Predicted band size: 47 kD

Observed band size: 47 kD