

TC10 Antibody (Center)
Affinity Purified Rabbit Polyclonal Antibody (Pab)
Catalog # AP5855c

Specification

TC10 Antibody (Center) - Product Information

Application	WB, IHC-P,E
Primary Accession	P17081
Other Accession	O9JL4 , O8R527 , O8BYP3 , O9HBH0 , Q3SZA1 , O62159 , P08134 , O9PSX7 , Q1RMJ6 , P62747 , P62746 , P62745 , Q3ZBW5 , P61589 , O9QUI0 , P61586 , P61585 , P53879 , P06780 , P48148 , Q22038 , P60764 , P60763 , O05144 , P15153 , P48554 , O9TU25 , O6RUV5 , P63001 , P63000 , P40792 , Q03206
Reactivity	Human
Predicted	Bovine, C.Elegans, Chicken, Drosophila, Monkey, Mouse, Pig, Rat, Yeast, Zebrafish
Host	Rabbit
Clonality	Polyclonal
Isotype	Rabbit IgG
Calculated MW	22659
Antigen Region	48-76

TC10 Antibody (Center) - Additional Information

Gene ID 23433

Other Names

Rho-related GTP-binding protein RhoQ, Ras-like protein TC10, Ras-like protein family member 7A, RHOQ, ARHQ, RASL7A, TC10

Target/Specificity

This TC10 antibody is generated from rabbits immunized with a KLH conjugated synthetic peptide between 48-76 amino acids from the Central region of human TC10.

Dilution

WB~~1:1000
IHC-P~~1:10~50

Format

Purified polyclonal antibody supplied in PBS with 0.09% (W/V) sodium azide. This antibody is purified through a protein A column, followed by peptide affinity purification.

Storage

Maintain refrigerated at 2-8°C for up to 2 weeks. For long term storage store at -20°C in small aliquots to prevent freeze-thaw cycles.

Precautions

TC10 Antibody (Center) is for research use only and not for use in diagnostic or therapeutic

procedures.

TC10 Antibody (Center) - Protein Information

Name RHOQ

Synonyms ARHQ, RASL7A, TC10

Function Plasma membrane-associated small GTPase which cycles between an active GTP-bound and an inactive GDP-bound state. In active state binds to a variety of effector proteins to regulate cellular responses. Involved in epithelial cell polarization processes. May play a role in CFTR trafficking to the plasma membrane. Causes the formation of thin, actin-rich surface projections called filopodia.

Cellular Location

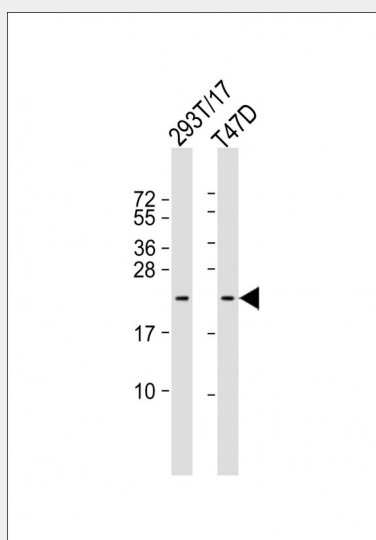
Cytoplasm. Cell membrane; Lipid-anchor

TC10 Antibody (Center) - Protocols

Provided below are standard protocols that you may find useful for product applications.

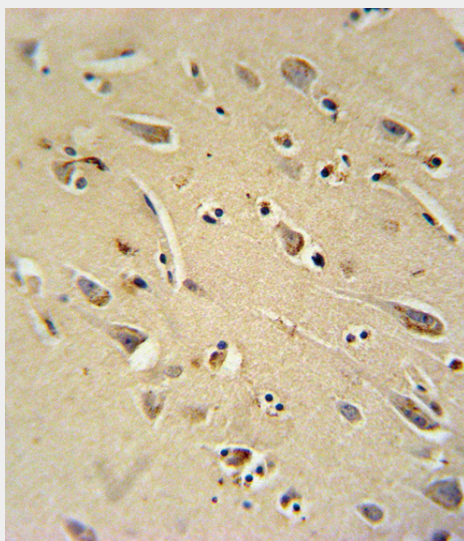
- [Western Blot](#)
- [Blocking Peptides](#)
- [Dot Blot](#)
- [Immunohistochemistry](#)
- [Immunofluorescence](#)
- [Immunoprecipitation](#)
- [Flow Cytometry](#)
- [Cell Culture](#)

TC10 Antibody (Center) - Images



All lanes : Anti-TC10 Antibody (Center) at 1:1000 dilution Lane 1: 293T/17 whole cell lysate Lane 2: T47D whole cell lysate Lysates/proteins at 20 µg per lane. Secondary Goat Anti-Rabbit IgG, (H+L), Peroxidase conjugated at 1/10000 dilution. Predicted band size : 23 kDa Blocking/Dilution

buffer: 5% NFDN/TBST.



TC10 Antibody (Center) (Cat. #AP5855c) immunohistochemistry analysis in formalin fixed and paraffin embedded human brain tissue followed by peroxidase conjugation of the secondary antibody and DAB staining. This data demonstrates the use of the TC10 Antibody (Center) for immunohistochemistry. Clinical relevance has not been evaluated.