

KDEL Polyclonal Antibody
Purified Rabbit Polyclonal Antibody (Pab)
Catalog # AP58558

Specification

KDEL Polyclonal Antibody - Product Information

Application	IHC-P
Primary Accession	O6UW63
Reactivity	Rat, Pig, Dog, Bovine
Host	Rabbit
Clonality	Polyclonal
Calculated MW	58043

KDEL Polyclonal Antibody - Additional Information

Gene ID 79070

Other Names

Protein O-glucosyltransferase 2, 2.4.1.-, Endoplasmic reticulum resident protein 58, ER protein 58, ERp58, KDEL motif-containing protein 1 {ECO:0000312|HGNC:HGNC:19350}, Protein O-xylosyltransferase POGLUT2, 2.4.2.-, POGLUT2 {ECO:0000303|PubMed:30127001, ECO:0000312|HGNC:HGNC:19350}

Format

0.01M TBS(pH7.4), 0.09% (W/V) sodium azide and 50% Glyce

Storage

Store at -20 °C for one year. Avoid repeated freeze/thaw cycles. When reconstituted in sterile pH 7.4 0.01M PBS or diluent of antibody the antibody is stable for at least two weeks at 2-4 °C.

KDEL Polyclonal Antibody - Protein Information

Name POGLUT2 {ECO:0000303|PubMed:30127001, ECO:0000312|HGNC:HGNC:19350}

Function

Protein glucosyltransferase that catalyzes the transfer of glucose from UDP-glucose to a serine residue within the consensus sequence peptide C-X-N-T-X-G-S-F-X-C (PubMed:30127001). Can also catalyze the transfer of xylose from UDP-xylose but less efficiently (PubMed:30127001). Specifically targets extracellular EGF repeats of proteins such as NOTCH1, NOTCH3, FBN1, FBN2 and LTBP1 (PubMed:30127001, PubMed:34411563). May regulate the transport of NOTCH1 and NOTCH3 to the plasma membrane and thereby the Notch signaling pathway (PubMed:30127001).

Cellular Location

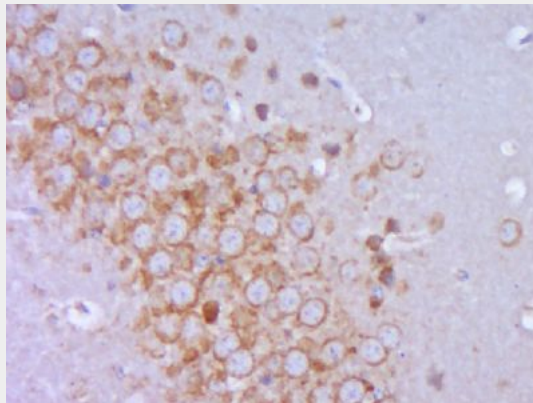
Endoplasmic reticulum lumen {ECO:0000255|PROSITE- ProRule:PRU10138}

KDEL Polyclonal Antibody - Protocols

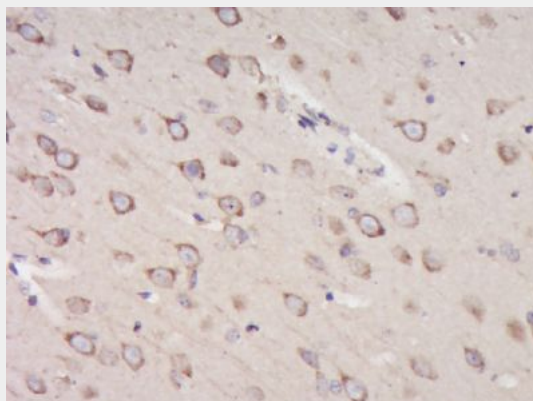
Provided below are standard protocols that you may find useful for product applications.

- [Western Blot](#)
- [Blocking Peptides](#)
- [Dot Blot](#)
- [Immunohistochemistry](#)
- [Immunofluorescence](#)
- [Immunoprecipitation](#)
- [Flow Cytometry](#)
- [Cell Culture](#)

KDEL Polyclonal Antibody - Images



Paraformaldehyde-fixed, paraffin embedded (Mouse brain); Antigen retrieval by boiling in sodium citrate buffer (pH6.0) for 15min; Block endogenous peroxidase by 3% hydrogen peroxide for 20 minutes; Blocking buffer (normal goat serum) at 37°C for 30min; Antibody incubation with (KDEL) Polyclonal Antibody, Unconjugated (bs-6940R) at 1:400 overnight at 4°C, followed by operating according to SP Kit(Rabbit) (sp-0023) instructions and DAB staining.



Paraformaldehyde-fixed, paraffin embedded (Rat brain); Antigen retrieval by boiling in sodium citrate buffer (pH6.0) for 15min; Block endogenous peroxidase by 3% hydrogen peroxide for 20 minutes; Blocking buffer (normal goat serum) at 37°C for 30min; Antibody incubation with (KDEL) Polyclonal Antibody, Unconjugated (bs-6940R) at 1:400 overnight at 4°C, followed by operating according to SP Kit(Rabbit) (sp-0023) instructions and DAB staining.

