

PIWIL4 Polyclonal Antibody
Purified Rabbit Polyclonal Antibody (Pab)
Catalog # AP58529**Specification**

PIWIL4 Polyclonal Antibody - Product Information

Application	IHC-P
Primary Accession	Q7Z3Z4
Reactivity	Rat, Dog, Bovine
Host	Rabbit
Clonality	Polyclonal
Calculated MW	96589

PIWIL4 Polyclonal Antibody - Additional Information**Gene ID** 143689**Other Names**

Piwi-like protein 4, PIWIL4, HIWI2, PIWI

Format

0.01M TBS(pH7.4), 0.09% (W/V) sodium azide and 50% Glyce

Storage

Store at -20 °C for one year. Avoid repeated freeze/thaw cycles. When reconstituted in sterile pH 7.4 0.01M PBS or diluent of antibody the antibody is stable for at least two weeks at 2-4 °C.

PIWIL4 Polyclonal Antibody - Protein Information**Name** PIWIL4**Synonyms** HIWI2, PIWI**Function**

Plays a central role during spermatogenesis by repressing transposable elements and preventing their mobilization, which is essential for the germline integrity (By similarity). Acts via the piRNA metabolic process, which mediates the repression of transposable elements during meiosis by forming complexes composed of piRNAs and Piwi proteins (By similarity). The PIWIL4-piRNA pathway acts in the nucleus and mediates silencing of active transposons: engages with nascent transposable element transcripts and governs the piRNA-directed DNA methylation and subsequent repression of transposons (By similarity). In contrast to PIWIL1 and PIWIL2, does not show endonuclease activity (By similarity). Directly binds piRNAs, a class of 24 to 30 nucleotide RNAs that are generated by a Dicer-independent mechanism and are primarily derived from transposons and other repeated sequence elements (By similarity). Associates with secondary piRNAs antisense and PIWIL2/MILI is required for such association (By similarity). The piRNA process acts upstream of known mediators of DNA methylation (By similarity). Plays a key role in the piRNA amplification loop, also named ping-pong amplification cycle, by acting as a 'slicer-incompetent' component that loads cleaved piRNAs from the 'slicer-competent' component

PIWIL2 and target them on genomic transposon loci in the nucleus (By similarity). May be involved in the chromatin-modifying pathway by inducing 'Lys-9' methylation of histone H3 at some loci (PubMed:17544373). In addition to its role in germline, PIWIL4 also plays a role in the regulation of somatic cells activities (By similarity). Plays a role in pancreatic beta cell function and insulin secretion (By similarity). Involved in maintaining cell morphology and functional integrity of retinal epithelial through Akt/GSK3alpha/beta signaling pathway (PubMed:28025795). When overexpressed, acts as an oncogene by inhibition of apoptosis and promotion of cells proliferation in tumors (PubMed:22483988).

Cellular Location

Nucleus. Cytoplasm Note=Probable component of the meiotic nuage, also named P granule, a germ-cell-specific organelle required to repress transposon activity during meiosis. PIWIL2/MILI is required for nuclear localization (By similarity). {ECO:0000250|UniProtKB:Q8CGT6}

Tissue Location

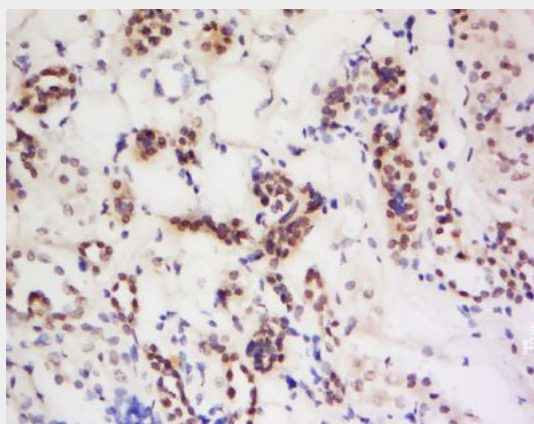
Ubiquitously expressed (PubMed:17544373, PubMed:22483988, PubMed:25038252, PubMed:28025795, PubMed:28711973) Detected in retina, retinal pigment epithelia cells (RPE) (at protein level) (PubMed:28025795).

PIWIL4 Polyclonal Antibody - Protocols

Provided below are standard protocols that you may find useful for product applications.

- [Western Blot](#)
- [Blocking Peptides](#)
- [Dot Blot](#)
- [Immunohistochemistry](#)
- [Immunofluorescence](#)
- [Immunoprecipitation](#)
- [Flow Cytometry](#)
- [Cell Culture](#)

PIWIL4 Polyclonal Antibody - Images



Tissue/cell: human kidney tissue; 4% Paraformaldehyde-fixed and paraffin-embedded;
Antigen retrieval: citrate buffer (0.01M, pH 6.0), Boiling bathing for 15min; Block endogenous peroxidase by 3% Hydrogen peroxide for 30min; Blocking buffer (normal goat serum,C-0005) at

37°C for 20 min;

Incubation: Anti-PIWIL4 Polyclonal Antibody, Unconjugated(bs-6853R) 1:200, overnight at 4°C, followed by conjugation to the secondary antibody(SP-0023) and DAB(C-0010) staining