

**MAGEB6 Polyclonal Antibody**  
**Purified Rabbit Polyclonal Antibody (Pab)**  
**Catalog # AP58523**

## Specification

---

### MAGEB6 Polyclonal Antibody - Product Information

Application	IHC-P
Primary Accession	<a href="#">Q8N7X4</a>
Host	Rabbit
Clonality	Polyclonal
Calculated MW	43992

### MAGEB6 Polyclonal Antibody - Additional Information

**Gene ID** 158809

#### Other Names

Melanoma-associated antigen B6, Cancer/testis antigen 3.4, CT3.4, MAGE-B6 antigen, MAGEB6

#### Format

0.01M TBS(pH7.4), 0.09% (W/V) sodium azide and 50% Glyce

#### Storage

Store at -20 °C for one year. Avoid repeated freeze/thaw cycles. When reconstituted in sterile pH 7.4 0.01M PBS or diluent of antibody the antibody is stable for at least two weeks at 2-4 °C.

### MAGEB6 Polyclonal Antibody - Protein Information

**Name** MAGEB6

#### Tissue Location

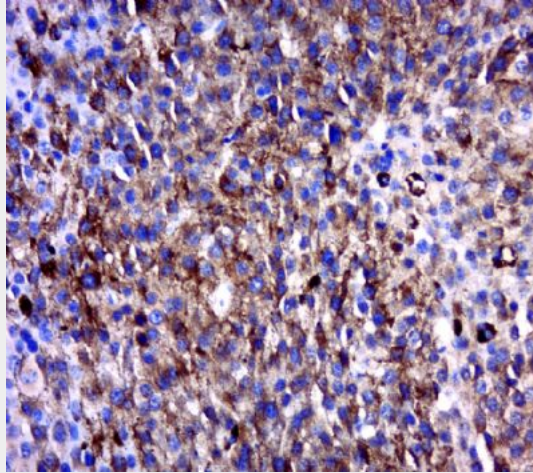
Expressed in testis. Not expressed in other normal tissues, but is expressed in tumors of different histological origins

### MAGEB6 Polyclonal Antibody - Protocols

Provided below are standard protocols that you may find useful for product applications.

- [Western Blot](#)
- [Blocking Peptides](#)
- [Dot Blot](#)
- [Immunohistochemistry](#)
- [Immunofluorescence](#)
- [Immunoprecipitation](#)
- [Flow Cytometry](#)
- [Cell Culture](#)

## MAGEB6 Polyclonal Antibody - Images



Paraformaldehyde-fixed, paraffin embedded (human melanoma tumor); Antigen retrieval by boiling in sodium citrate buffer (pH6.0) for 15min; Block endogenous peroxidase by 3% hydrogen peroxide for 20 minutes; Blocking buffer (normal goat serum) at 37°C for 30min; Antibody incubation with (MAGEB6) Polyclonal Antibody, Unconjugated (bs-6825R) at 1:400 overnight at 4°C, followed by a conjugated secondary (sp-0023) for 20 minutes and DAB staining.