

MAGEB4 Polyclonal Antibody
Purified Rabbit Polyclonal Antibody (Pab)
Catalog # AP58522

Specification

MAGEB4 Polyclonal Antibody - Product Information

Application	IHC-P
Primary Accession	O15481
Host	Rabbit
Clonality	Polyclonal
Calculated MW	38923

MAGEB4 Polyclonal Antibody - Additional Information

Gene ID 4115

Other Names

Melanoma-associated antigen B4, MAGE-B4 antigen, MAGEB4

Format

0.01M TBS(pH7.4), 0.09% (W/V) sodium azide and 50% Glyce

Storage

Store at -20 °C for one year. Avoid repeated freeze/thaw cycles. When reconstituted in sterile pH 7.4 0.01M PBS or diluent of antibody the antibody is stable for at least two weeks at 2-4 °C.

MAGEB4 Polyclonal Antibody - Protein Information

Name MAGEB4

Cellular Location

Cytoplasm {ECO:0000250|UniProtKB:A2A9R3}.

Tissue Location

Expressed in testis.

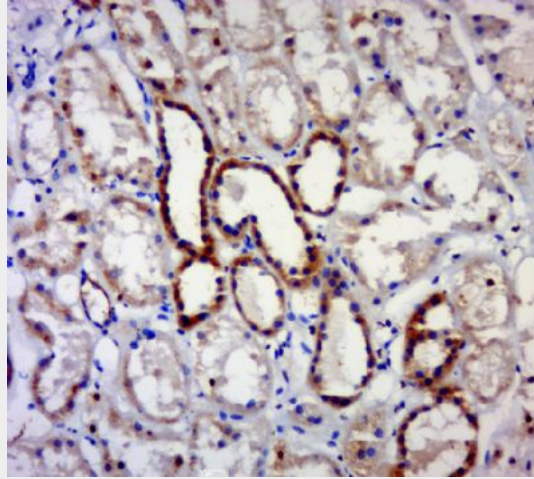
MAGEB4 Polyclonal Antibody - Protocols

Provided below are standard protocols that you may find useful for product applications.

- [Western Blot](#)
- [Blocking Peptides](#)
- [Dot Blot](#)
- [Immunohistochemistry](#)
- [Immunofluorescence](#)
- [Immunoprecipitation](#)

- [Flow Cytometry](#)
- [Cell Culture](#)

MAGEB4 Polyclonal Antibody - Images



Paraformaldehyde-fixed, paraffin embedded (human kidney tissue); Antigen retrieval by boiling in sodium citrate buffer (pH6.0) for 15min; Block endogenous peroxidase by 3% hydrogen peroxide for 20 minutes; Blocking buffer (normal goat serum) at 37°C for 30min; Antibody incubation with (MAGEB4) Polyclonal Antibody, Unconjugated (bs-6824R) at 1:400 overnight at 4°C, followed by a conjugated secondary (sp-0023) for 20 minutes and DAB staining.