

Laminin 5 Polyclonal Antibody
Purified Rabbit Polyclonal Antibody (Pab)
Catalog # AP58496**Specification**

Laminin 5 Polyclonal Antibody - Product Information

Application	IHC-P
Primary Accession	Q16787
Reactivity	Rat, Pig, Dog, Bovine
Host	Rabbit
Clonality	Polyclonal
Calculated MW	366619

Laminin 5 Polyclonal Antibody - Additional Information**Gene ID** 3909**Other Names**

Laminin subunit alpha-3, Epiligrin 170 kDa subunit, E170, Epiligrin subunit alpha, Kalinin subunit alpha, Laminin-5 subunit alpha, Laminin-6 subunit alpha, Laminin-7 subunit alpha, Nicein subunit alpha, LAMA3, LAMNA

Format

0.01M TBS(pH7.4), 0.09% (W/V) sodium azide and 50% Glyce

Storage

Store at -20 °C for one year. Avoid repeated freeze/thaw cycles. When reconstituted in sterile pH 7.4 0.01M PBS or diluent of antibody the antibody is stable for at least two weeks at 2-4 °C.

Laminin 5 Polyclonal Antibody - Protein Information**Name** LAMA3**Synonyms** LAMNA**Function**

Binding to cells via a high affinity receptor, laminin is thought to mediate the attachment, migration and organization of cells into tissues during embryonic development by interacting with other extracellular matrix components.

Cellular Location

Secreted, extracellular space, extracellular matrix, basement membrane. Note=Major component

Tissue Location

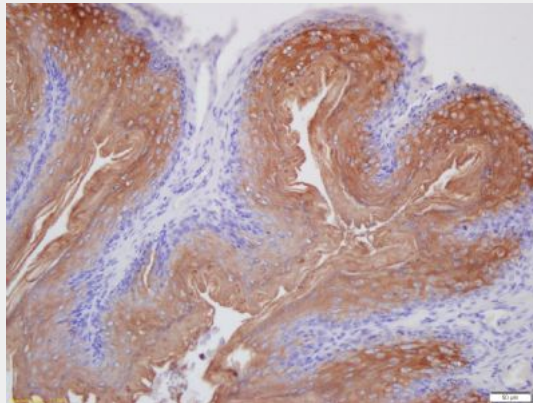
Skin; respiratory, urinary, and digestive epithelia and in other specialized tissues with prominent secretory or protective functions. Epithelial basement membrane, and epithelial cell tongue that migrates into a wound bed. A differential and focal expression of the subunit alpha-3 is observed in the CNS

Laminin 5 Polyclonal Antibody - Protocols

Provided below are standard protocols that you may find useful for product applications.

- [Western Blot](#)
- [Blocking Peptides](#)
- [Dot Blot](#)
- [Immunohistochemistry](#)
- [Immunofluorescence](#)
- [Immunoprecipitation](#)
- [Flow Cytometry](#)
- [Cell Culture](#)

Laminin 5 Polyclonal Antibody - Images



Tissue/cell: mouse stomach wall; 4% Paraformaldehyde-fixed and paraffin-embedded;

Antigen retrieval: citrate buffer (0.01M, pH 6.0), Boiling bathing for 15min; Block endogenous peroxidase by 3% Hydrogen peroxide for 30min; Blocking buffer (normal goat serum,C-0005) at 37°C for 20 min;

Incubation: Anti-Laminin 5 Polyclonal Antibody, Unconjugated(bs-6713R) 1:200, overnight at 4°C, followed by conjugation to the secondary antibody(SP-0023) and DAB(C-0010) staining