

**RLBP1L1 Polyclonal Antibody**  
**Purified Rabbit Polyclonal Antibody (Pab)**  
**Catalog # AP58472**

**Specification**

---

**RLBP1L1 Polyclonal Antibody - Product Information**

Application	IHC-P
Primary Accession	<a href="#">Q8IUQ0</a>
Reactivity	Rat, Pig, Dog, Bovine
Host	Rabbit
Clonality	Polyclonal
Calculated MW	40788

**RLBP1L1 Polyclonal Antibody - Additional Information**

**Gene ID** 157807

**Other Names**

Clavesin-1, Cellular retinaldehyde-binding protein-like, Retinaldehyde-binding protein 1-like 1, clathrin vesicle-associated Sec14 protein 1, CLVS1, CRALBPL, RLBP1L1

**Format**

0.01M TBS(pH7.4), 0.09% (W/V) sodium azide and 50% Glyce

**Storage**

Store at -20 °C for one year. Avoid repeated freeze/thaw cycles. When reconstituted in sterile pH 7.4 0.01M PBS or diluent of antibody the antibody is stable for at least two weeks at 2-4 °C.

**RLBP1L1 Polyclonal Antibody - Protein Information**

**Name** CLVS1

**Synonyms** CRALBPL, RLBP1L1

**Function**

Required for normal morphology of late endosomes and/or lysosomes in neurons (By similarity). Binds phosphatidylinositol 3,5- bisphosphate (PtdIns(3,5)P2).

**Cellular Location**

Golgi apparatus, trans-Golgi network membrane; Peripheral membrane protein. Cytoplasmic vesicle, clathrin-coated vesicle. Early endosome membrane; Peripheral membrane protein

**Tissue Location**

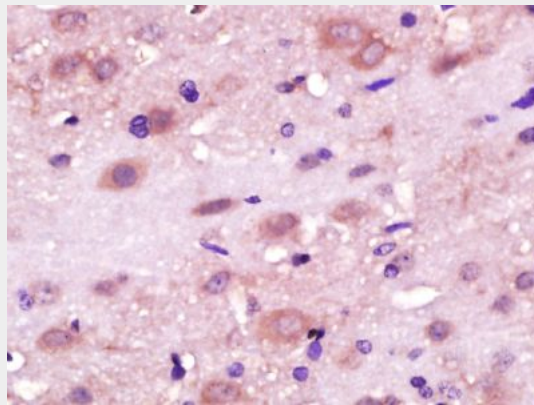
Expressed mainly in the brain.

**RLBP1L1 Polyclonal Antibody - Protocols**

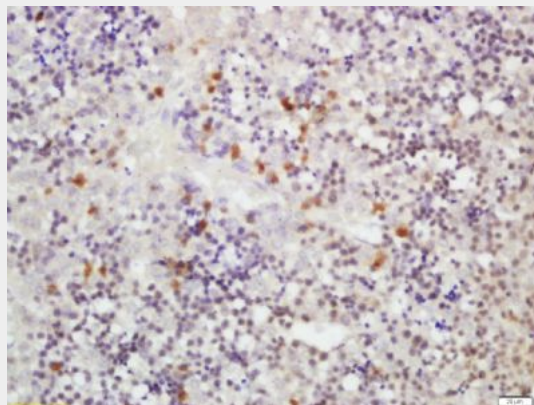
Provided below are standard protocols that you may find useful for product applications.

- [Western Blot](#)
- [Blocking Peptides](#)
- [Dot Blot](#)
- [Immunohistochemistry](#)
- [Immunofluorescence](#)
- [Immunoprecipitation](#)
- [Flow Cytometry](#)
- [Cell Culture](#)

#### **RLBP1L1 Polyclonal Antibody - Images**



Paraformaldehyde-fixed, paraffin embedded (Rat brain); Antigen retrieval by boiling in sodium citrate buffer (pH6.0) for 15min; Block endogenous peroxidase by 3% hydrogen peroxide for 20 minutes; Blocking buffer (normal goat serum) at 37°C for 30min; Antibody incubation with (RLBP1L1) Polyclonal Antibody, Unconjugated (bs-6569R) at 1:400 overnight at 4°C, followed by operating according to SP Kit(Rabbit) (sp-0023) instructions and DAB staining.



Tissue/cell: mouse fetal liver; 4% Paraformaldehyde-fixed and paraffin-embedded;

Antigen retrieval: citrate buffer ( 0.01M, pH 6.0 ), Boiling bathing for 15min; Block endogenous peroxidase by 3% Hydrogen peroxide for 30min; Blocking buffer (normal goat serum,C-0005) at 37°C for 20 min;

Incubation: Anti-RLBP1L1 Polyclonal Antibody, Unconjugated(bs-6569R) 1:200, overnight at 4°C, followed by conjugation to the secondary antibody(SP-0023) and DAB(C-0010) staining