

MARVELD1 Polyclonal Antibody
Purified Rabbit Polyclonal Antibody (Pab)
Catalog # AP58467**Specification**

MARVELD1 Polyclonal Antibody - Product Information

Application	WB
Primary Accession	O9BSK0
Host	Rabbit
Clonality	Polyclonal
Calculated MW	18914

MARVELD1 Polyclonal Antibody - Additional Information**Gene ID** 83742**Other Names**

MARVEL domain-containing protein 1, MARVELD1, MRVLDC1

Format

0.01M TBS(pH7.4), 0.09% (W/V) sodium azide and 50% Glyce

Storage

Store at -20 °C for one year. Avoid repeated freeze/thaw cycles. When reconstituted in sterile pH 7.4 0.01M PBS or diluent of antibody the antibody is stable for at least two weeks at 2-4 °C.

MARVELD1 Polyclonal Antibody - Protein Information**Name** MARVELD1**Synonyms** MRVLDC1**Function**

Microtubule-associated protein that exhibits cell cycle- dependent localization and can inhibit cell proliferation and migration.

Cellular Location

Cell membrane; Multi-pass membrane protein. Cytoplasm, cytoskeleton. Nucleus. Note=Observed in the nucleus and at the perinuclear region during interphase, but localizes at the mitotic spindle and midbody at metaphase. A significant fraction of MARVELD1 translocates to the plasma membrane during anaphase or upon microtubule depolymerization (By similarity).

Tissue Location

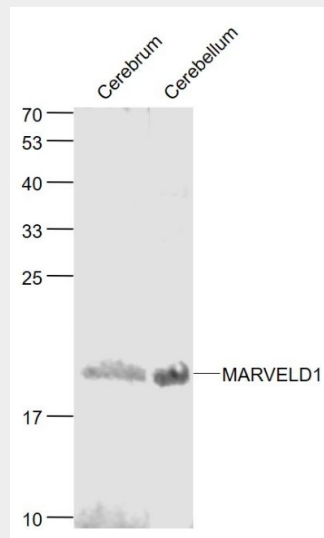
Widely expressed in normal tissues. Down-regulated in multiple primary tumors.

MARVELD1 Polyclonal Antibody - Protocols

Provided below are standard protocols that you may find useful for product applications.

- [Western Blot](#)
- [Blocking Peptides](#)
- [Dot Blot](#)
- [Immunohistochemistry](#)
- [Immunofluorescence](#)
- [Immunoprecipitation](#)
- [Flow Cytometry](#)
- [Cell Culture](#)

MARVELD1 Polyclonal Antibody - Images



Sample:

Cerebrum (Mouse) Lysate at 40 ug

Cerebellum (Mouse) Lysate at 40 ug

Primary: Anti- MARVELD1 (bs-6548R) at 1/1000 dilution

Secondary: IRDye800CW Goat Anti-Rabbit IgG at 1/20000 dilution

Predicted band size: 19 kD

Observed band size: 19 kD