

CRISP3 Polyclonal Antibody
Purified Rabbit Polyclonal Antibody (Pab)
Catalog # AP58459

Specification

CRISP3 Polyclonal Antibody - Product Information

Application	WB
Primary Accession	P54108
Reactivity	Rat, Dog, Bovine
Host	Rabbit
Clonality	Polyclonal
Calculated MW	27630

CRISP3 Polyclonal Antibody - Additional Information

Gene ID 10321

Other Names

Cysteine-rich secretory protein 3, CRISP-3, Specific granule protein of 28 kDa, SGP28, CRISP3

Format

0.01M TBS(pH7.4), 0.09% (W/V) sodium azide and 50% Glyce

Storage

Store at -20 °C for one year. Avoid repeated freeze/thaw cycles. When reconstituted in sterile pH 7.4 0.01M PBS or diluent of antibody the antibody is stable for at least two weeks at 2-4 °C.

CRISP3 Polyclonal Antibody - Protein Information

Name CRISP3

Cellular Location

Secreted. Note=In neutrophils, localized in specific granules

Tissue Location

Salivary gland, pancreas and prostate > epididymis, ovary, thymus and colon

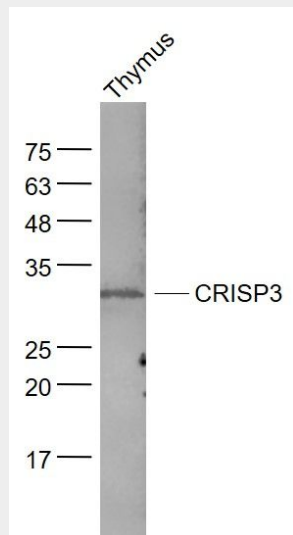
CRISP3 Polyclonal Antibody - Protocols

Provided below are standard protocols that you may find useful for product applications.

- [Western Blot](#)
- [Blocking Peptides](#)
- [Dot Blot](#)
- [Immunohistochemistry](#)
- [Immunofluorescence](#)

- [Immunoprecipitation](#)
- [Flow Cytometry](#)
- [Cell Culture](#)

CRISP3 Polyclonal Antibody - Images



Sample:

Thymus (Mouse) Lysate at 40 ug

Primary: Anti- CRISP3 (bs-6521R) at 1/1000 dilution

Secondary: IRDye800CW Goat Anti-Rabbit IgG at 1/20000 dilution

Predicted band size: 25 kD

Observed band size: 29kD