

**RLLM1 Polyclonal Antibody**  
**Purified Rabbit Polyclonal Antibody (Pab)**  
**Catalog # AP58456****Specification**

---

**RLLM1 Polyclonal Antibody - Product Information**

Application	ICC
Primary Accession	<a href="#">O9Y224</a>
Reactivity	Rat, Pig, Dog, Bovine
Host	Rabbit
Clonality	Polyclonal
Calculated MW	28068

**RLLM1 Polyclonal Antibody - Additional Information****Gene ID** 51637**Other Names**

RNA transcription, translation and transport factor protein {ECO:0000312|HGNC:HGNC:23169}, CLE7 homolog, CLE, hCLE, RTRAF ([http://www.genenames.org/cgi-bin/gene\\_symbol\\_report?hgnc\\_id=23169](http://www.genenames.org/cgi-bin/gene_symbol_report?hgnc_id=23169))  
target="\_blank">HGNC:23169</a>)

**Format**

0.01M TBS(pH7.4), 0.09% (W/V) sodium azide and 50% Glyce

**Storage**

Store at -20 °C for one year. Avoid repeated freeze/thaw cycles. When reconstituted in sterile pH 7.4 0.01M PBS or diluent of antibody the antibody is stable for at least two weeks at 2-4 °C.

**RLLM1 Polyclonal Antibody - Protein Information****Name** RTRAF ([HGNC:23169](#))**Function**

RNA-binding protein involved in modulation of mRNA transcription by Polymerase II (PubMed:<http://www.uniprot.org/citations/16950395>). Component of the tRNA-splicing ligase complex and is required for tRNA ligation (PubMed:<http://www.uniprot.org/citations/24870230>). May be required for RNA transport (PubMed:<http://www.uniprot.org/citations/24608264>).

**Cellular Location**

Nucleus. Cytoplasm, cytosol. Cytoplasm, perinuclear region. Cytoplasm, cytoskeleton, microtubule organizing center, centrosome. Note=May localize at the centrosome during mitosis (PubMed:15147888). Shuttles between the cytosol and the nucleus: enters into the nucleus in case of active transcription while it accumulates in cytosol when transcription level is low (PubMed:24608264).

### Tissue Location

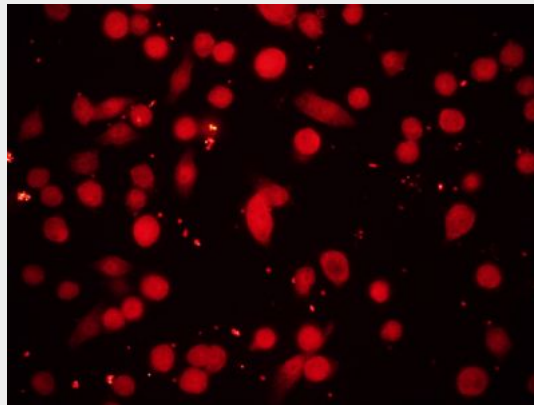
Widely expressed. Expressed at high level in heart and skeletal muscle. Expressed at intermediate level in liver, pancreas, fetal brain and fetal lung. Weakly expressed in adult brain, adult lung, placenta, fetal liver and fetal kidney. Overexpressed in many brain tumors.

### RLLM1 Polyclonal Antibody - Protocols

Provided below are standard protocols that you may find useful for product applications.

- [Western Blot](#)
- [Blocking Peptides](#)
- [Dot Blot](#)
- [Immunohistochemistry](#)
- [Immunofluorescence](#)
- [Immunoprecipitation](#)
- [Flow Cytometry](#)
- [Cell Culture](#)

### RLLM1 Polyclonal Antibody - Images



Tissue/cell: human pancreas carcinoma (BXPC-3);4% Paraformaldehyde-fixed;  
Blocking buffer (normal goat serum,C-0005) at 37°C for 20 min;  
Incubation: Anti-RLLM1 Polyclonal Antibody, Unconjugated(bs-6514R) 1:200, overnight at 4°C;  
The secondary antibody was Goat Anti-Rabbit IgG, Cy5 conjugated(bs-0295G-Cy5)used at 1:200 dilution for 40 minutes at 37°C.