

FAM107A Polyclonal Antibody
Purified Rabbit Polyclonal Antibody (Pab)
Catalog # AP58428**Specification**

FAM107A Polyclonal Antibody - Product Information

Application	IHC-P
Primary Accession	O95990
Reactivity	Rat, Pig, Dog, Bovine
Host	Rabbit
Clonality	Polyclonal
Calculated MW	17455

FAM107A Polyclonal Antibody - Additional Information**Gene ID** 11170**Other Names**

Actin-associated protein FAM107A, Down-regulated in renal cell carcinoma 1, Protein TU3A, FAM107A ([HGNC:30827](http://www.genenames.org/cgi-bin/gene_symbol_report?hgnc_id=30827))

Format

0.01M TBS(pH7.4), 0.09% (W/V) sodium azide and 50% Glyce

Storage

Store at -20 °C for one year. Avoid repeated freeze/thaw cycles. When reconstituted in sterile pH 7.4 0.01M PBS or diluent of antibody the antibody is stable for at least two weeks at 2-4 °C.

FAM107A Polyclonal Antibody - Protein Information**Name** FAM107A ([HGNC:30827](#))**Function**

Stress-inducible actin-binding protein that plays a role in synaptic and cognitive functions by modulating actin filamentous (F- actin) dynamics. Mediates polymerization of globular actin to F-actin. Also binds to, stabilizes and bundles F-actin. Involved in synaptic function by regulating neurite outgrowth in an actin-dependent manner and for the acquisition of hippocampus-dependent cognitive function, such as learning and long-term memory (By similarity). Plays a role in the actin and microtubule cytoskeleton organization; negatively regulates focal adhesion (FA) assembly promoting malignant glial cell migration in an actin-, microtubule- and MAP1A-dependent manner (PubMed:[20543869](http://www.uniprot.org/citations/20543869)). Also involved in neuroblastoma G1/S phase cell cycle progression and cell proliferation inhibition by stimulating ubiquitination of NF-kappa-B subunit RELA and NF-kappa-B degradation in a COMMD1- and actin-dependent manner (PubMed:[10564580](http://www.uniprot.org/citations/10564580), PubMed:[28604741](http://www.uniprot.org/citations/28604741)). May play a role in tumor development (PubMed:[28604741](#)).

<http://www.uniprot.org/citations/10564580>

Cellular Location

Nucleus. Cytoplasm, cytoskeleton, stress fiber. Cell junction, focal adhesion. Cell projection, ruffle membrane. Synapse {ECO:0000250|UniProtKB:Q78TU8}. Note=Colocalizes with F-actin and COMMD1 in the nucleus (PubMed:28604741). Colocalizes with MAP1A along actin stress fibers and membrane ruffles (PubMed:20543869)

Tissue Location

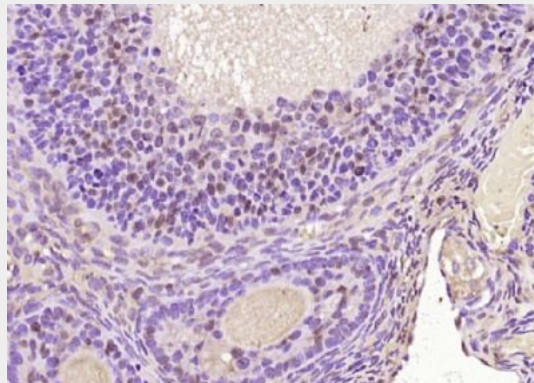
Widely expressed (PubMed:10564580). Expressed in neurons (PubMed:20543869). Expressed in malignant glial tumors (PubMed:20543869). Expression is reduced or absent in a number of cancer cell lines (PubMed:10564580).

FAM107A Polyclonal Antibody - Protocols

Provided below are standard protocols that you may find useful for product applications.

- [Western Blot](#)
- [Blocking Peptides](#)
- [Dot Blot](#)
- [Immunohistochemistry](#)
- [Immunofluorescence](#)
- [Immunoprecipitation](#)
- [Flow Cytometry](#)
- [Cell Culture](#)

FAM107A Polyclonal Antibody - Images



Paraformaldehyde-fixed, paraffin embedded (rat ovary tissue); Antigen retrieval by boiling in sodium citrate buffer (pH6.0) for 15min; Block endogenous peroxidase by 3% hydrogen peroxide for 20 minutes; Blocking buffer (normal goat serum) at 37°C for 30min; Antibody incubation with (FAM107A) Polyclonal Antibody, Unconjugated (bs-6381R) at 1:200 overnight at 4°C, followed by operating according to SP Kit(Rabbit) (sp-0023) instructions and DAB staining.