

**TMPRSS4 Polyclonal Antibody**  
**Purified Rabbit Polyclonal Antibody (Pab)**  
**Catalog # AP58410****Specification**

---

**TMPRSS4 Polyclonal Antibody - Product Information**

Application	WB
Primary Accession	<a href="#">O9NRS4</a>
Reactivity	Rat, Dog
Host	Rabbit
Clonality	Polyclonal
Calculated MW	48246

**TMPRSS4 Polyclonal Antibody - Additional Information****Gene ID** 56649**Other Names**

Transmembrane protease serine 4, 3.4.21.-, Channel-activating protease 2, CAPH2, Membrane-type serine protease 2, MT-SP2, Transmembrane protease serine 4 catalytic chain, TMPRSS4 ([HGNC:11878](http://www.genenames.org/cgi-bin/gene_symbol_report?hgnc_id=11878))

**Format**

0.01M TBS(pH7.4), 0.09% (W/V) sodium azide and 50% Glyce

**Storage**

Store at -20 °C for one year. Avoid repeated freeze/thaw cycles. When reconstituted in sterile pH 7.4 0.01M PBS or diluent of antibody the antibody is stable for at least two weeks at 2-4 °C.

**TMPRSS4 Polyclonal Antibody - Protein Information****Name** TMPRSS4 ([HGNC:11878](#))**Function**

Plasma membrane-anchored serine protease that directly induces processing of pro-uPA/PLAU into the active form through proteolytic activity (PubMed:[24434139](http://www.uniprot.org/citations/24434139)). Seems to be capable of activating ENaC (By similarity).

**Cellular Location**

Cell membrane; Single-pass type II membrane protein

**Tissue Location**

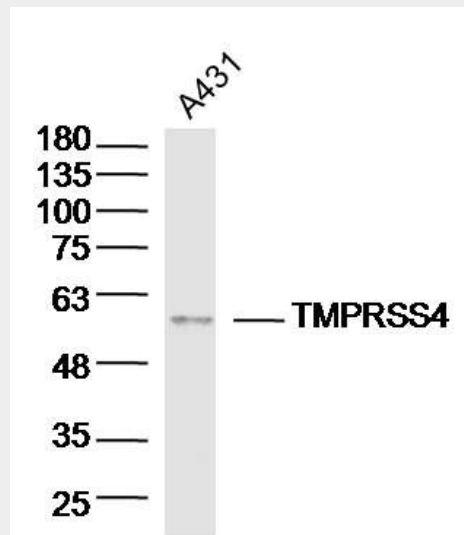
High levels in pancreatic, gastric, colorectal and ampullary cancer. Very weak expression in normal gastrointestinal and urogenital tract (PubMed:10825129). Coexpressed with ACE2 within mature enterocytes (PubMed:32404436).

## TMPRSS4 Polyclonal Antibody - Protocols

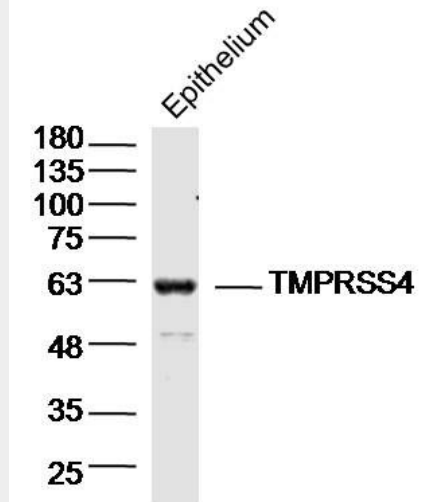
Provided below are standard protocols that you may find useful for product applications.

- [Western Blot](#)
- [Blocking Peptides](#)
- [Dot Blot](#)
- [Immunohistochemistry](#)
- [Immunofluorescence](#)
- [Immunoprecipitation](#)
- [Flow Cytometry](#)
- [Cell Culture](#)

## TMPRSS4 Polyclonal Antibody - Images



Sample: A431 (Human) Cell Lysate at 40 ug  
Primary: Anti-TMPRSS4(bs-6286R) at 1/300 dilution  
Secondary: IRDye800CW Goat Anti-Rabbit IgG at 1/20000 dilution  
Predicted band size: 48kD  
Observed band size: 55kD



Sample: Epithelium (Mouse) Lysate at 40 ug  
Primary: Anti-TMPRSS4(bs-6286R) at 1/300 dilution  
Secondary: IRDye800CW Goat Anti-Rabbit IgG at 1/20000 dilution  
Predicted band size: 48kD  
Observed band size: 60kD