

GSTO2 Antibody (Center)
Affinity Purified Rabbit Polyclonal Antibody (Pab)
Catalog # AP5840c

Specification

GSTO2 Antibody (Center) - Product Information

Application	IF, WB, FC,E
Primary Accession	O9H4Y5
Other Accession	O8K2Q2 , NP_899062.1
Reactivity	Human, Mouse
Host	Rabbit
Clonality	Polyclonal
Isotype	Rabbit IgG
Calculated MW	28254
Antigen Region	82-110

GSTO2 Antibody (Center) - Additional Information

Gene ID 119391

Other Names

Glutathione S-transferase omega-2, GSTO-2, Glutathione S-transferase omega 2-2, GSTO 2-2, Glutathione-dependent dehydroascorbate reductase, Monomethylarsonic acid reductase, MMA(V) reductase, GSTO2

Target/Specificity

This GSTO2 antibody is generated from rabbits immunized with a KLH conjugated synthetic peptide between 82-110 amino acids from the Central region of human GSTO2.

Dilution

IF~~1:10~50
WB~~1:1000
FC~~1:10~50

Format

Purified polyclonal antibody supplied in PBS with 0.09% (W/V) sodium azide. This antibody is purified through a protein A column, followed by peptide affinity purification.

Storage

Maintain refrigerated at 2-8°C for up to 2 weeks. For long term storage store at -20°C in small aliquots to prevent freeze-thaw cycles.

Precautions

GSTO2 Antibody (Center) is for research use only and not for use in diagnostic or therapeutic procedures.

GSTO2 Antibody (Center) - Protein Information

Name GSTO2

Function Exhibits glutathione-dependent thiol transferase activity. Has high dehydroascorbate reductase activity and may contribute to the recycling of ascorbic acid. Participates in the biotransformation of inorganic arsenic and reduces monomethylarsonic acid (MMA).

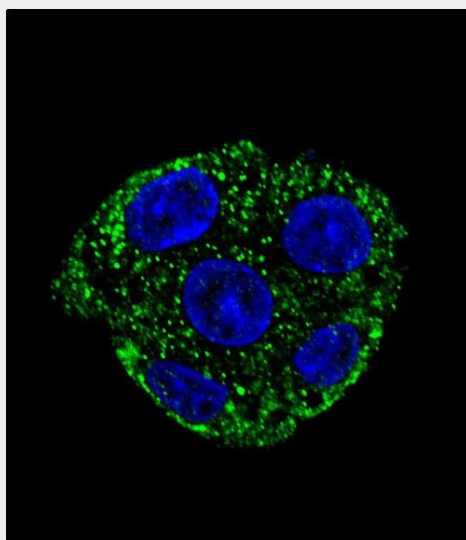
Tissue Location

Expressed in a range of tissues, including the liver, kidney, skeletal muscle and prostate. Strongest expression in the testis.

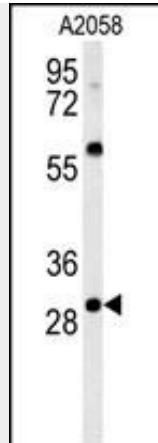
GSTO2 Antibody (Center) - Protocols

Provided below are standard protocols that you may find useful for product applications.

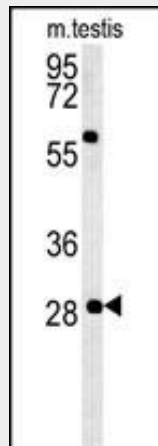
- [Western Blot](#)
- [Blocking Peptides](#)
- [Dot Blot](#)
- [Immunohistochemistry](#)
- [Immunofluorescence](#)
- [Immunoprecipitation](#)
- [Flow Cytometry](#)
- [Cell Culture](#)

GSTO2 Antibody (Center) - Images

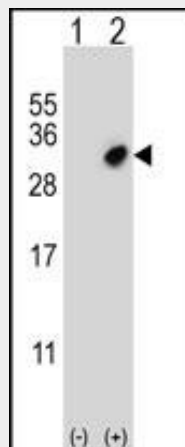
Confocal immunofluorescent analysis of GSTO2 Antibody (Center)(Cat#AP5840c) with HepG2 cell followed by Alexa Fluor 488-conjugated goat anti-rabbit IgG (green). DAPI was used to stain the cell nuclear (blue).



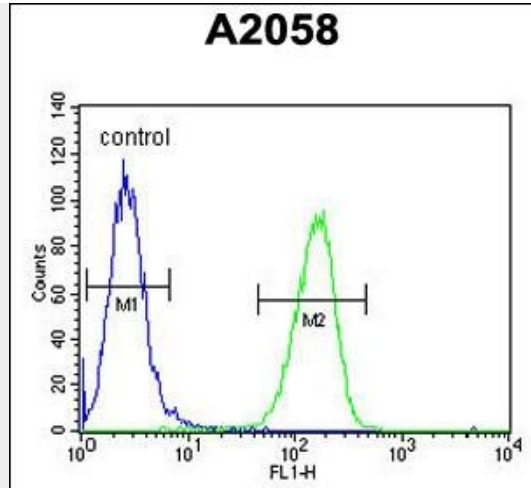
GSTO2 Antibody (Center) (Cat. #AP5840c) western blot analysis in A2058 cell line lysates (35ug/lane). This demonstrates the GSTO2 antibody detected the GSTO2 protein (arrow).



GSTO2 Antibody (Center) (Cat. #AP5840c) western blot analysis in mouse testis tissue lysates (35ug/lane). This demonstrates the GSTO2 antibody detected the GSTO2 protein (arrow).



Western blot analysis of GSTO2 (arrow) using rabbit polyclonal GSTO2 Antibody (Center) (Cat. #AP5840c). 293 cell lysates (2 ug/lane) either nontransfected (Lane 1) or transiently transfected (Lane 2) with the GSTO2 gene.



GSTO2 Antibody (Center) (Cat. #AP5840c) flow cytometric analysis of A2058 cells (right histogram) compared to a negative control cell (left histogram). FITC-conjugated goat-anti-rabbit secondary antibodies were used for the analysis.