

**Choline dehydrogenase Polyclonal Antibody**  
**Purified Rabbit Polyclonal Antibody (Pab)**  
**Catalog # AP58408****Specification**

---

**Choline dehydrogenase Polyclonal Antibody - Product Information**

Application	<b>WB</b>
Primary Accession	<a href="#">O8NE62</a>
Reactivity	<b>Rat, Pig, Dog, Bovine</b>
Host	<b>Rabbit</b>
Clonality	<b>Polyclonal</b>
Calculated MW	<b>65358</b>

**Choline dehydrogenase Polyclonal Antibody - Additional Information****Gene ID** 55349**Other Names**

Choline dehydrogenase, mitochondrial, CDH, CHD, 1.1.99.1, CHDH

**Format**

0.01M TBS(pH7.4), 0.09% (W/V) sodium azide and 50% Glyce

**Storage**

Store at -20 °C for one year. Avoid repeated freeze/thaw cycles. When reconstituted in sterile pH 7.4 0.01M PBS or diluent of antibody the antibody is stable for at least two weeks at 2-4 °C.

**Choline dehydrogenase Polyclonal Antibody - Protein Information****Name** CHDH**Cellular Location**

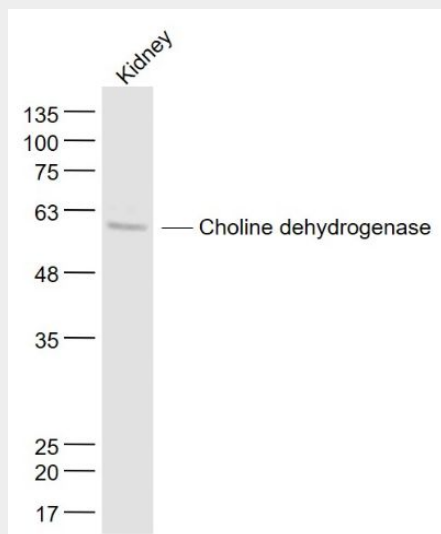
Mitochondrion inner membrane.

**Choline dehydrogenase Polyclonal Antibody - Protocols**

Provided below are standard protocols that you may find useful for product applications.

- [Western Blot](#)
- [Blocking Peptides](#)
- [Dot Blot](#)
- [Immunohistochemistry](#)
- [Immunofluorescence](#)
- [Immunoprecipitation](#)
- [Flow Cytometry](#)
- [Cell Culture](#)

## Choline dehydrogenase Polyclonal Antibody - Images



**Sample:**

Kidney (Mouse) Lysate at 40 ug

Primary: Anti- Choline dehydrogenase (bs-6278R) at 1/1000 dilution

Secondary: IRDye800CW Goat Anti-Rabbit IgG at 1/20000 dilution

Predicted band size: 62 kD

Observed band size: 62 kD