

**LCMT1 Polyclonal Antibody**  
**Purified Rabbit Polyclonal Antibody (Pab)**  
**Catalog # AP58404**

## Specification

---

### LCMT1 Polyclonal Antibody - Product Information

Application	WB
Primary Accession	<a href="#">O9UIC8</a>
Reactivity	Rat
Host	Rabbit
Clonality	Polyclonal
Calculated MW	38379

### LCMT1 Polyclonal Antibody - Additional Information

**Gene ID** 51451

#### Other Names

Leucine carboxyl methyltransferase 1, 2.1.1.233, Protein-leucine O-methyltransferase, [Phosphatase 2A protein]-leucine-carboxy methyltransferase 1, LCMT1, LCMT

#### Format

0.01M TBS(pH7.4), 0.09% (W/V) sodium azide and 50% Glyce

#### Storage

Store at -20 °C for one year. Avoid repeated freeze/thaw cycles. When reconstituted in sterile pH 7.4 0.01M PBS or diluent of antibody the antibody is stable for at least two weeks at 2-4 °C.

### LCMT1 Polyclonal Antibody - Protein Information

**Name** LCMT1

**Synonyms** LCMT

#### Function

Methylates the carboxyl group of the C-terminal leucine residue of protein phosphatase 2A catalytic subunits to form alpha- leucine ester residues.

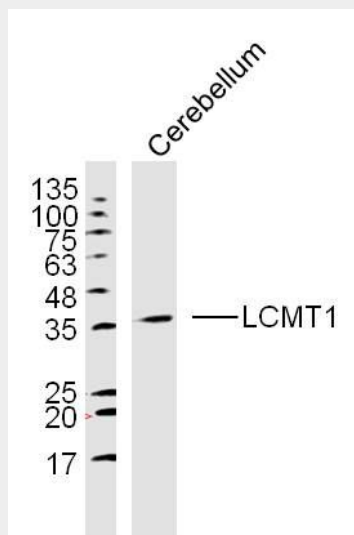
### LCMT1 Polyclonal Antibody - Protocols

Provided below are standard protocols that you may find useful for product applications.

- [Western Blot](#)
- [Blocking Peptides](#)
- [Dot Blot](#)
- [Immunohistochemistry](#)

- [Immunofluorescence](#)
- [Immunoprecipitation](#)
- [Flow Cytometry](#)
- [Cell Culture](#)

### LCMT1 Polyclonal Antibody - Images



Sample: Cerebellum (Mouse) Lysate at 40 ug  
Primary: Anti-LCMT1 (bs-6249R) at 1/300 dilution  
Secondary: IRDye800CW Goat Anti-Rabbit IgG at 1/20000 dilution  
Predicted band size: 38 kD  
Observed band size: 38 kD