

**RASGEF1A Polyclonal Antibody**  
**Purified Rabbit Polyclonal Antibody (Pab)**  
**Catalog # AP58387****Specification**

---

**RASGEF1A Polyclonal Antibody - Product Information**

Application	IHC-P
Primary Accession	<a href="#">Q8N9B8</a>
Reactivity	Rat, Pig, Dog, Bovine
Host	Rabbit
Clonality	Polyclonal
Calculated MW	54556

**RASGEF1A Polyclonal Antibody - Additional Information****Gene ID** 221002**Other Names**

Ras-GEF domain-containing family member 1A, RASGEF1A

**Format**

0.01M TBS(pH7.4), 0.09% (W/V) sodium azide and 50% Glyce

**Storage**

Store at -20 °C for one year. Avoid repeated freeze/thaw cycles. When reconstituted in sterile pH 7.4 0.01M PBS or diluent of antibody the antibody is stable for at least two weeks at 2-4 °C.

**RASGEF1A Polyclonal Antibody - Protein Information****Name** RASGEF1A**Function**

Guanine nucleotide exchange factor (GEF) with specificity for RAP2A, KRAS, HRAS, and NRAS (in vitro). Plays a role in cell migration.

**Tissue Location**

Detected in brain and spinal cord. Highly expressed in a number of intrahepatic cholangiocarcinoma tissue biopsies

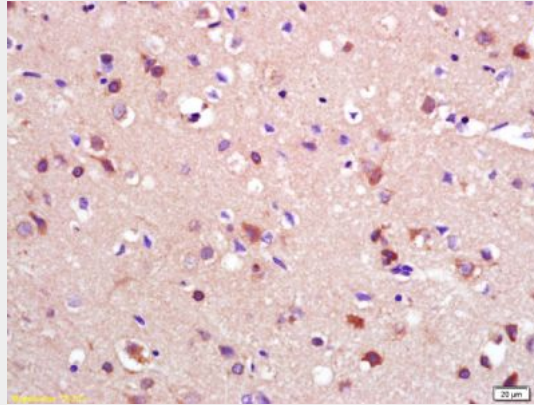
**RASGEF1A Polyclonal Antibody - Protocols**

Provided below are standard protocols that you may find useful for product applications.

- [Western Blot](#)
- [Blocking Peptides](#)
- [Dot Blot](#)

- [Immunohistochemistry](#)
- [Immunofluorescence](#)
- [Immunoprecipitation](#)
- [Flow Cytometry](#)
- [Cell Culture](#)

#### **RASGEF1A Polyclonal Antibody - Images**



Tissue/cell: rat brain tissue; 4% Paraformaldehyde-fixed and paraffin-embedded;

Antigen retrieval: citrate buffer ( 0.01M, pH 6.0 ), Boiling bathing for 15min; Block endogenous peroxidase by 3% Hydrogen peroxide for 30min; Blocking buffer (normal goat serum,C-0005) at 37°C for 20 min;

Incubation: Anti-RASGEF1A Polyclonal Antibody, Unconjugated(bs-6156R) 1:200, overnight at 4°C, followed by conjugation to the secondary antibody(SP-0023) and DAB(C-0010) staining