

**RERG Polyclonal Antibody**  
**Purified Rabbit Polyclonal Antibody (Pab)**  
**Catalog # AP58373**

**Specification**

---

**RERG Polyclonal Antibody - Product Information**

Application	<b>WB, IHC-P</b>
Primary Accession	<a href="#">O96A58</a>
Reactivity	<b>Rat, Dog, Bovine</b>
Host	<b>Rabbit</b>
Clonality	<b>Polyclonal</b>
Calculated MW	<b>22608</b>

**RERG Polyclonal Antibody - Additional Information**

**Gene ID** 85004

**Other Names**

Ras-related and estrogen-regulated growth inhibitor, 3.6.5.2, RERG

**Format**

0.01M TBS(pH7.4), 0.09% (W/V) sodium azide and 50% Glyce

**Storage**

Store at -20 °C for one year. Avoid repeated freeze/thaw cycles. When reconstituted in sterile pH 7.4 0.01M PBS or diluent of antibody the antibody is stable for at least two weeks at 2-4 °C.

**RERG Polyclonal Antibody - Protein Information**

**Name** RERG

**Function**

Binds GDP/GTP and possesses intrinsic GTPase activity. Has higher affinity for GDP than for GTP. In cell lines overexpression leads to a reduction in the rate of proliferation, colony formation and in tumorigenic potential.

**Cellular Location**

Cytoplasm.

**Tissue Location**

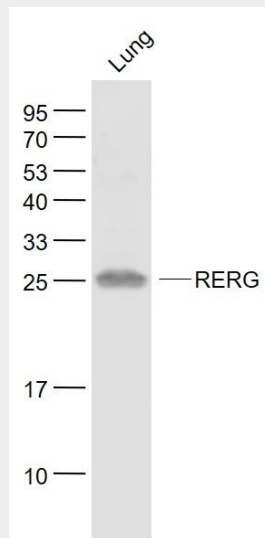
Detected in heart, brain, placenta, lung, liver, skin, kidney and pancreas. Detected in estrogen receptor-positive breast-derived cell lines, but not in estrogen receptor-negative cell lines. Expression is decreased or lost in a significant proportion of primary breast tumors with poor clinical prognosis

**RERG Polyclonal Antibody - Protocols**

Provided below are standard protocols that you may find useful for product applications.

- [Western Blot](#)
- [Blocking Peptides](#)
- [Dot Blot](#)
- [Immunohistochemistry](#)
- [Immunofluorescence](#)
- [Immunoprecipitation](#)
- [Flow Cytometry](#)
- [Cell Culture](#)

#### **REG Polyclonal Antibody - Images**



#### **Sample:**

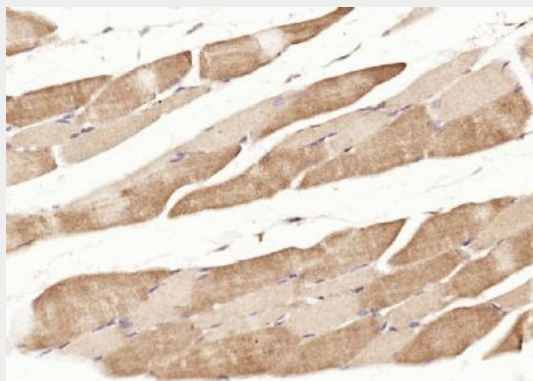
Lung (Mouse) Lysate at 40 ug

Primary: Anti- RERG (bs-6091R) at 1/1000 dilution

Secondary: IRDye800CW Goat Anti-Rabbit IgG at 1/20000 dilution

Predicted band size: 22 kD

Observed band size: 25 kD



Paraformaldehyde-fixed, paraffin embedded (rat skeletal muscle); Antigen retrieval by boiling in sodium citrate buffer (pH6.0) for 15min; Block endogenous peroxidase by 3% hydrogen peroxide for 20 minutes; Blocking buffer (normal goat serum) at 37°C for 30min; Antibody incubation with (RERG) Polyclonal Antibody, Unconjugated (bs-6091R) at 1:200 overnight at 4°C, followed by operating according to SP Kit(Rabbit) (sp-0023) instructions and DAB staining.