

OS9 Polyclonal Antibody
Purified Rabbit Polyclonal Antibody (Pab)
Catalog # AP58344**Specification**

OS9 Polyclonal Antibody - Product Information

Application	WB
Primary Accession	O13438
Reactivity	Rat, Dog, Bovine
Host	Rabbit
Clonality	Polyclonal
Calculated MW	75562

OS9 Polyclonal Antibody - Additional Information**Gene ID** 10956**Other Names**

Protein OS-9, Amplified in osteosarcoma 9, OS9

Format

0.01M TBS(pH7.4), 0.09% (W/V) sodium azide and 50% Glyce

Storage

Store at -20 °C for one year. Avoid repeated freeze/thaw cycles. When reconstituted in sterile pH 7.4 0.01M PBS or diluent of antibody the antibody is stable for at least two weeks at 2-4 °C.

OS9 Polyclonal Antibody - Protein Information**Name** OS9**Function**

Lectin which functions in endoplasmic reticulum (ER) quality control and ER-associated degradation (ERAD). May bind terminally misfolded non-glycosylated proteins as well as improperly folded glycoproteins, retain them in the ER, and possibly transfer them to the ubiquitination machinery and promote their degradation. Possible targets include TRPV4.

Cellular Location

Endoplasmic reticulum lumen

Tissue Location

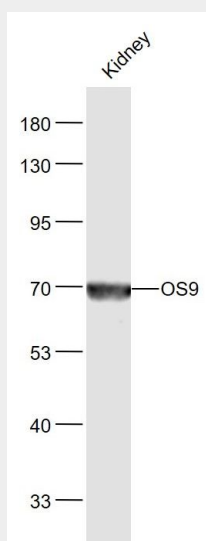
Ubiquitously expressed. Found as well in all tumor cell lines analyzed, amplified in sarcomas. Highly expressed in osteosarcoma SJSA-1 and rhabdomyosarcoma Rh30 cell lines. Isoform 2 is the major isoform detected in all cell types examined

OS9 Polyclonal Antibody - Protocols

Provided below are standard protocols that you may find useful for product applications.

- [Western Blot](#)
- [Blocking Peptides](#)
- [Dot Blot](#)
- [Immunohistochemistry](#)
- [Immunofluorescence](#)
- [Immunoprecipitation](#)
- [Flow Cytometry](#)
- [Cell Culture](#)

OS9 Polyclonal Antibody - Images



Sample:

Kidney (Mouse) Lysate at 40 ug

Primary: Anti-OS9 (bs-5901CW Goat Anti-Rabbit IgG at 1/20000 dilution

Predicted band size: 76 kD

Observed band size: 70 kD