

KLK15 Polyclonal Antibody
Purified Rabbit Polyclonal Antibody (Pab)
Catalog # AP58338**Specification**

KLK15 Polyclonal Antibody - Product Information

Application	IHC-P
Primary Accession	O9H2R5
Reactivity	Rat, Pig, Dog, Bovine
Host	Rabbit
Clonality	Polyclonal
Calculated MW	28087

KLK15 Polyclonal Antibody - Additional Information**Gene ID** 55554**Other Names**

Kallikrein-15, 3.4.21.-, ACO protease, KLK15

Format

0.01M TBS(pH7.4), 0.09% (W/V) sodium azide and 50% Glyce

Storage

Store at -20 °C for one year. Avoid repeated freeze/thaw cycles. When reconstituted in sterile pH 7.4 0.01M PBS or diluent of antibody the antibody is stable for at least two weeks at 2-4 °C.

KLK15 Polyclonal Antibody - Protein Information**Name** KLK15**Function**

Protease whose physiological substrate is not yet known.

Cellular Location

Secreted.

Tissue Location

Highest expression in the thyroid gland. Also expressed in the prostate, salivary, and adrenal glands and in the colon testis and kidney.

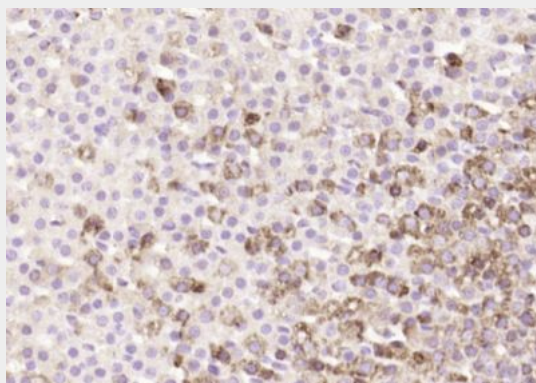
KLK15 Polyclonal Antibody - Protocols

Provided below are standard protocols that you may find useful for product applications.

- [Western Blot](#)

- [Blocking Peptides](#)
- [Dot Blot](#)
- [Immunohistochemistry](#)
- [Immunofluorescence](#)
- [Immunoprecipitation](#)
- [Flow Cytometry](#)
- [Cell Culture](#)

KLK15 Polyclonal Antibody - Images



Paraformaldehyde-fixed, paraffin embedded (rat adrenal gland); Antigen retrieval by boiling in sodium citrate buffer (pH6.0) for 15min; Block endogenous peroxidase by 3% hydrogen peroxide for 20 minutes; Blocking buffer (normal goat serum) at 37°C for 30min; Antibody incubation with (KLK15) Polyclonal Antibody, Unconjugated (bs-5867R) at 1:200 overnight at 4°C, followed by operating according to SP Kit(Rabbit) (sp-0023) instructions and DAB staining.