

**ADAM18 Polyclonal Antibody**  
**Purified Rabbit Polyclonal Antibody (Pab)**  
**Catalog # AP58332**

**Specification**

---

**ADAM18 Polyclonal Antibody - Product Information**

Application	<b>WB</b>
Primary Accession	<a href="#">O9Y3Q7</a>
Reactivity	<b>Dog</b>
Host	<b>Rabbit</b>
Clonality	<b>Polyclonal</b>
Calculated MW	<b>82856</b>

**ADAM18 Polyclonal Antibody - Additional Information**

**Gene ID** 8749

**Other Names**

Disintegrin and metalloproteinase domain-containing protein 18, ADAM 18, Transmembrane metalloproteinase-like, disintegrin-like, and cysteine-rich protein III, tMDC III, ADAM18, TMDC3

**Format**

0.01M TBS(pH7.4), 0.09% (W/V) sodium azide and 50% Glyce

**Storage**

Store at -20 °C for one year. Avoid repeated freeze/thaw cycles. When reconstituted in sterile pH 7.4 0.01M PBS or diluent of antibody the antibody is stable for at least two weeks at 2-4 °C.

**ADAM18 Polyclonal Antibody - Protein Information**

**Name** ADAM18

**Synonyms** TMDC3

**Function**

Sperm surface membrane protein that may be involved in spermatogenesis and fertilization. This is a non catalytic metalloprotease-like protein (By similarity).

**Cellular Location**

Membrane; Single-pass type I membrane protein.

**Tissue Location**

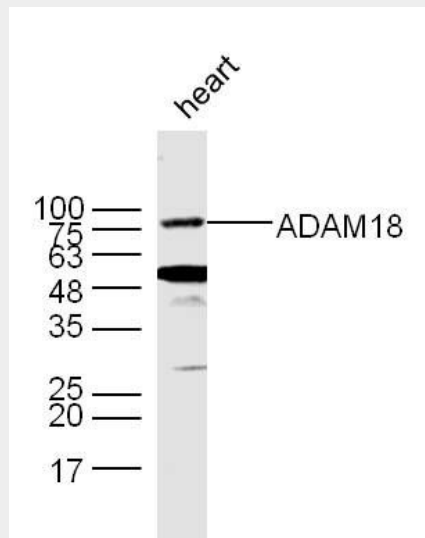
Expressed specifically in testis.

**ADAM18 Polyclonal Antibody - Protocols**

Provided below are standard protocols that you may find useful for product applications.

- [Western Blot](#)
- [Blocking Peptides](#)
- [Dot Blot](#)
- [Immunohistochemistry](#)
- [Immunofluorescence](#)
- [Immunoprecipitation](#)
- [Flow Cytometry](#)
- [Cell Culture](#)

#### ADAM18 Polyclonal Antibody - Images



#### Sample:

Heart (Mouse) Lysate at 40 ug

Primary: Anti- ADAM18 (bs-10196R) at 1/300 dilution

Secondary: IRDye800CW Goat Anti-Rabbit IgG at 1/20000 dilution

Predicted band size: 62 kD

Observed band size: 75/50 kD