

ESAM Polyclonal Antibody
Purified Rabbit Polyclonal Antibody (Pab)
Catalog # AP58327

Specification

ESAM Polyclonal Antibody - Product Information

Application	WB
Primary Accession	Q96AP7
Reactivity	Rat
Host	Rabbit
Clonality	Polyclonal
Calculated MW	41176

ESAM Polyclonal Antibody - Additional Information

Gene ID 90952

Other Names

Endothelial cell-selective adhesion molecule, ESAM

Format

0.01M TBS(pH7.4), 0.09% (W/V) sodium azide and 50% Glyce

Storage

Store at -20 °C for one year. Avoid repeated freeze/thaw cycles. When reconstituted in sterile pH 7.4 0.01M PBS or diluent of antibody the antibody is stable for at least two weeks at 2-4 °C.

ESAM Polyclonal Antibody - Protein Information

Name ESAM

Function

Can mediate aggregation most likely through a homophilic molecular interaction.

Cellular Location

Cell junction, adherens junction {ECO:0000250|UniProtKB:Q925F2}. Cell junction, tight junction {ECO:0000250|UniProtKB:Q925F2}. Cell membrane; Single-pass type I membrane protein {ECO:0000250|UniProtKB:Q925F2}

Tissue Location

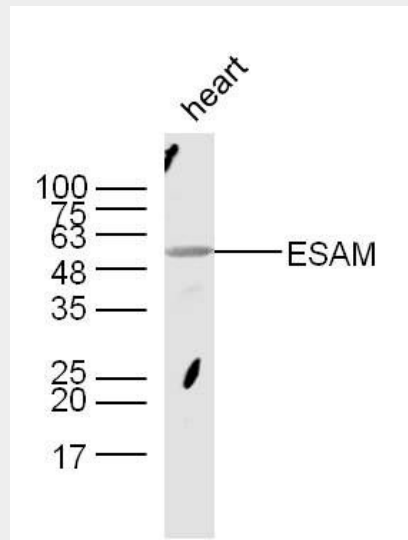
Highly expressed in endothelial cells.

ESAM Polyclonal Antibody - Protocols

Provided below are standard protocols that you may find useful for product applications.

- [Western Blot](#)
- [Blocking Peptides](#)
- [Dot Blot](#)
- [Immunohistochemistry](#)
- [Immunofluorescence](#)
- [Immunoprecipitation](#)
- [Flow Cytometry](#)
- [Cell Culture](#)

ESAM Polyclonal Antibody - Images



Sample:

heart (Mouse) Lysate at 40 ug

Primary: Anti-ESAM (bs-5838R) at 1/300 dilution

Secondary: IRDye800CW Goat Anti-Rabbit IgG at 1/20000 dilution

Predicted band size: 37/41 kD

Observed band size: 55/48 kD