

RAIDD Polyclonal Antibody
Purified Rabbit Polyclonal Antibody (Pab)
Catalog # AP58318

Specification

RAIDD Polyclonal Antibody - Product Information

Application	WB
Primary Accession	P78560
Reactivity	Rat, Pig, Dog, Bovine
Host	Rabbit
Clonality	Polyclonal
Calculated MW	22745

RAIDD Polyclonal Antibody - Additional Information

Gene ID 8738

Other Names

Death domain-containing protein CRADD, Caspase and RIP adapter with death domain, RIP-associated protein with a death domain, CRADD, RAIDD

Format

0.01M TBS(pH7.4), 0.09% (W/V) sodium azide and 50% Glycerol

Storage

Store at -20 °C for one year. Avoid repeated freeze/thaw cycles. When reconstituted in sterile pH 7.4 0.01M PBS or diluent of antibody the antibody is stable for at least two weeks at 2-4 °C.

RAIDD Polyclonal Antibody - Protein Information

Name CRADD

Synonyms RAIDD

Function

Adapter protein that associates with PIDD1 and the caspase CASP2 to form the PIDDosome, a complex that activates CASP2 and triggers apoptosis (PubMed: [15073321](http://www.uniprot.org/citations/15073321), PubMed: [16652156](http://www.uniprot.org/citations/16652156), PubMed: [17159900](http://www.uniprot.org/citations/17159900), PubMed: [17289572](http://www.uniprot.org/citations/17289572), PubMed: [9044836](http://www.uniprot.org/citations/9044836)). Also recruits CASP2 to the TNFR-1 signaling complex through its interaction with RIPK1 and TRADD and may play a role in the tumor necrosis factor-mediated signaling pathway (PubMed: [8985253](http://www.uniprot.org/citations/8985253)).

Cellular Location

Cytoplasm {ECO:0000250|UniProtKB:O88843}. Nucleus {ECO:0000250|UniProtKB:O88843}

Tissue Location

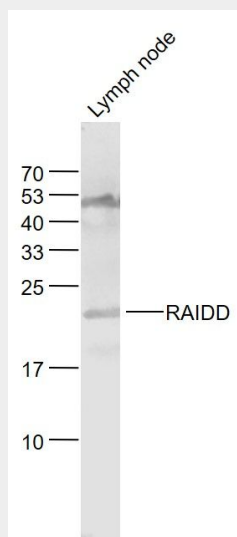
Constitutively expressed in most tissues, with particularly high expression in adult heart, testis, liver, skeletal muscle, fetal liver and kidney.

RAIDD Polyclonal Antibody - Protocols

Provided below are standard protocols that you may find useful for product applications.

- [Western Blot](#)
- [Blocking Peptides](#)
- [Dot Blot](#)
- [Immunohistochemistry](#)
- [Immunofluorescence](#)
- [Immunoprecipitation](#)
- [Flow Cytometry](#)
- [Cell Culture](#)

RAIDD Polyclonal Antibody - Images



Sample:

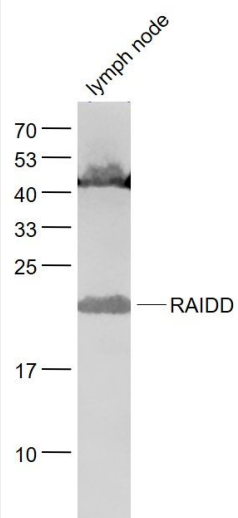
Lymph node (Mouse) Lysate at 40 ug

Primary: Anti-RAIDD (bs-5815R) at 1/1000 dilution

Secondary: IRDye800CW Goat Anti-Rabbit IgG at 1/20000 dilution

Predicted band size: 22 kD

Observed band size: 22 kD

**Sample:**

Lymph node (Mouse) Lysate at 40 ug

Primary: Anti- RAIDD (bs-5815R) at 1/1000 dilution

Secondary: IRDye800CW Goat Anti-Rabbit IgG at 1/20000 dilution

Predicted band size: 22 kD

Observed band size: 22 kD