

FAP1 Polyclonal Antibody
Purified Rabbit Polyclonal Antibody (Pab)
Catalog # AP58306

Specification

FAP1 Polyclonal Antibody - Product Information

Application	FC
Primary Accession	O12923
Reactivity	Rat, Pig, Dog, Bovine
Host	Rabbit
Clonality	Polyclonal
Calculated MW	276906

FAP1 Polyclonal Antibody - Additional Information

Gene ID 5783

Other Names

Tyrosine-protein phosphatase non-receptor type 13, 3.1.3.48, Fas-associated protein-tyrosine phosphatase 1, FAP-1, PTP-BAS, Protein-tyrosine phosphatase 1E, PTP-E1, hPTPE1, Protein-tyrosine phosphatase PTPL1, PTPN13, PNP1, PTP1E, PTPL1

Format

0.01M TBS(pH7.4), 0.09% (W/V) sodium azide and 50% Glyce

Storage

Store at -20 °C for one year. Avoid repeated freeze/thaw cycles. When reconstituted in sterile pH 7.4 0.01M PBS or diluent of antibody the antibody is stable for at least two weeks at 2-4 °C.

FAP1 Polyclonal Antibody - Protein Information

Name PTPN13

Synonyms PNP1, PTP1E, PTPL1

Function

Tyrosine phosphatase which negatively regulates FAS-induced apoptosis and NGFR-mediated pro-apoptotic signaling (PubMed:[15611135](http://www.uniprot.org/citations/15611135)). May regulate phosphoinositide 3-kinase (PI3K) signaling through dephosphorylation of PIK3R2 (PubMed:[23604317](http://www.uniprot.org/citations/23604317)).

Cellular Location

Cytoplasm, cytoskeleton. Nucleus. Cell projection, lamellipodium. Note=Colocalizes with F-actin (PubMed:10826496). Colocalizes with PKN2 in lamellipodia-like structure, regions of large actin turnover (PubMed:11356191)

Tissue Location

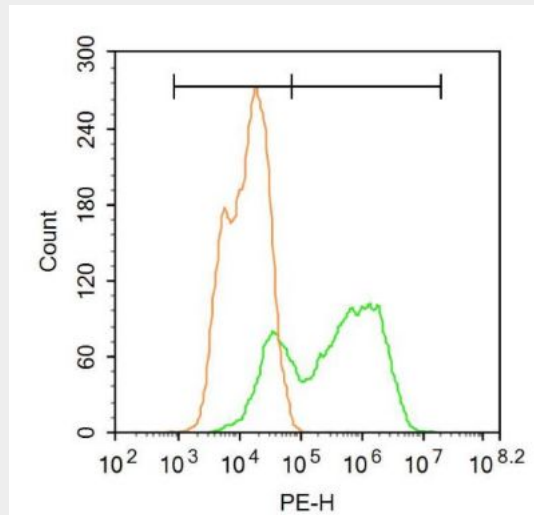
Expressed in keratinocytes (at protein level) (PubMed:29043977). Present in most tissues with the exception of the liver and skeletal muscle. Most abundant in lung, kidney and fetal brain.

FAP1 Polyclonal Antibody - Protocols

Provided below are standard protocols that you may find useful for product applications.

- [Western Blot](#)
- [Blocking Peptides](#)
- [Dot Blot](#)
- [Immunohistochemistry](#)
- [Immunofluorescence](#)
- [Immunoprecipitation](#)
- [Flow Cytometry](#)
- [Cell Culture](#)

FAP1 Polyclonal Antibody - Images



Blank control:A549.

Primary Antibody (green line): Rabbit Anti-FAP1 antibody (bs-5760R)

Dilution: 1 μ g / 10^6 cells;

Isotype Control Antibody (orange line): Rabbit IgG .

Secondary Antibody : Goat anti-rabbit IgG-PE

Dilution: 3 μ g /test.

Protocol

The cells were fixed with 4% PFA (10min at room temperature)and then permeabilized with 90% ice-cold methanol for 20 min at-20°C. The cells were then incubated in 5% BSA to block non-specific protein-protein interactions for 30 min at at room temperature .Cells stained with Primary Antibody for 30 min at room temperature. The secondary antibody used for 40 min at room temperature. Acquisition of 20,000 events was performed.